

MOBIE FOUR DEPARTURE

AL-322 (FAA)

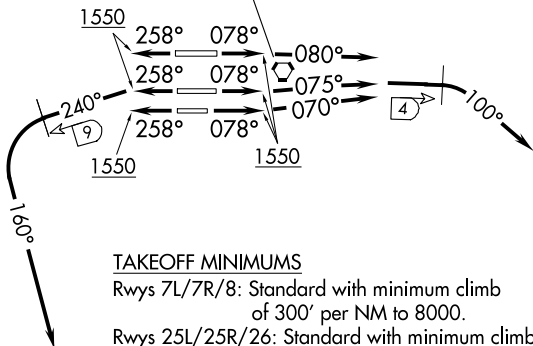
PHOENIX SKY HARBOR INTL (PHX)

PHOENIX, ARIZONA

D-ATIS
 127.575
 CLNC DEL
 118.1 269.2
 CPDLC
 GND CON
 119.75 269.2 (NORTH)
 132.55 269.2 (SOUTH)
 PHOENIX TOWER
 118.7 278.8 (Rwy 8-26)
 120.9 254.3 (Rwys 7L-25R, 7R-25L)
 PHOENIX DEP CON
 126.8 269.6

PHOENIX
 115.6 PXR
 Chan 103
 N33°25.98'-W111°58.21'

**TOP ALTITUDE:
 8000**

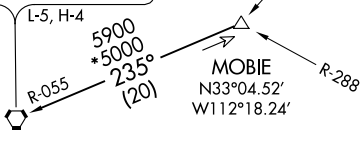


TAKEOFF MINIMUMS

Rwys 7L/7R/8: Standard with minimum climb of 300' per NM to 8000.
 Rwys 25L/25R/26: Standard with minimum climb of 350' per NM to 8000.

GILA BEND
 116.6 GBN
 Chan 113
 N32°57.38'-W112°40.46'

NOTE: Restricted to turbojet and turboprop aircraft only.
 NOTE: DME and RADAR required.



NOTE: Chart not to scale.

DEPARTURE ROUTE DESCRIPTION

- TAKEOFF RUNWAY 8:** Climb heading 078° to 1550, then climbing right turn heading 080°, at 4 DME east of PXR VORTAC, climbing right turn heading 100°. Thence. . .
- TAKEOFF RUNWAY 7L:** Climb heading 078° to 1550, then climbing left turn heading 075°, at 4 DME east of PXR VORTAC, climbing right turn heading 100°. Thence. . .
- TAKEOFF RUNWAY 7R:** Climb heading 078° to 1550, then climbing left turn heading 070°, at 4 DME east of PXR VORTAC, climbing right turn heading 100°. Thence. . .
- TAKEOFF RUNWAY 25L:** Climb heading 258° to 1550, then climbing left turn heading 240°, at 9 DME west of PXR VORTAC, climbing left turn heading 160°. Thence. . .
- TAKEOFF RUNWAY 25R:** Climb heading 258° to 1550, then climbing left turn heading 240°, at 9 DME west of PXR VORTAC, climbing left turn heading 160°. Thence. . .
- TAKEOFF RUNWAY 26:** Climb heading 258° to 1550, then climbing left turn heading 240°, at 9 DME west of PXR VORTAC, climbing left turn heading 160°. Thence. . .

. . . maintain 8000, expect RADAR vectors to MOBIE INT thence via (transition). Expect filed altitude 3 minutes after departure.

LOST COMMUNICATIONS: Expect filed altitude 3 minutes after departure.

GILA BEND TRANSITION (MOBIE4.GBN): From over MOBIE INT via GBN R-055 to GBN VORTAC.

MOBIE FOUR DEPARTURE

SW-4, 25 FEB 2021 to 25 MAR 2021

SW-4, 25 FEB 2021 to 25 MAR 2021