

# RNAV (RNP) Z RWY 25L

PHOENIX SKY HARBOR INTL (PHX)

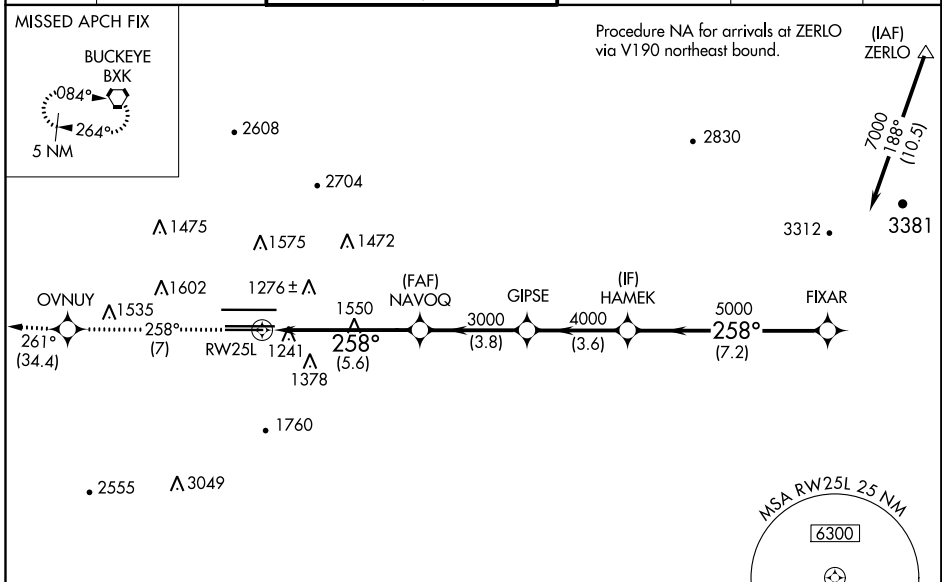
APP CRS <b>258°</b>	Rwy Idg <b>7800</b>
	TDZE <b>1126</b>
	Apt Elev <b>1135</b>

**⚠** For inoperative MALSR, increase RNP 0.11 all Cats visibility to 1¾, RNP 0.30 all Cats visibility to 2. Visibility reduction by helicopters NA. GPS required. For uncompensated Baro-VNAV systems, procedure NA below 1°C (34°F) or above 46°C (116°F). Simultaneous approach authorized with ILS or LOC Rwy 26. Use of FD or AP providing RNAV track guidance required during simultaneous operations.

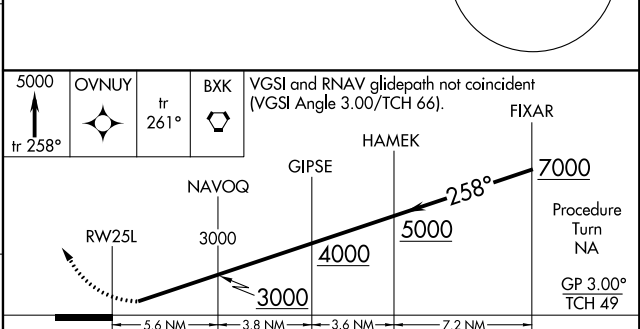
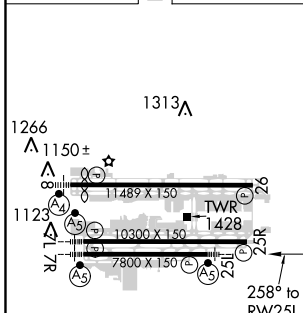


**MISSED APPROACH:** Climb to 5000 via track 258° to OVNUY and via track 261° to BKK VORTAC and hold.

D-ATIS <b>127.575</b>	PHOENIX APP CON <b>128.65 353.9</b>	PHOENIX TOWER <b>118.7 278.8</b> (Rwy 8-26) <b>120.9 254.3</b> (Rwy 7L-25R, 7R-25L)	GND CON <b>119.75 269.2</b> (N) <b>132.55 269.2</b> (S)	CLNC DEL <b>118.1 269.2</b>	CPDLC
--------------------------	--	---	---	--------------------------------	-------



ELEV 1135	<b>D</b>	TDZE 1126
-----------	----------	-----------



CATEGORY	A	B	C	D
RNP 0.11 DA		1617-1¼	491 (500-1¼)	
RNP 0.30 DA		1664-1½	538 (600-1½)	

HIRL Rwys 8-26, 7L-25R and 7R-25L  
REIL Rwy 26

**AUTHORIZATION REQUIRED**

SW-4, 25 FEB 2021 to 25 MAR 2021

SW-4, 25 FEB 2021 to 25 MAR 2021