

APP CRS	Rwy Idg	10300
078°	TDZE	1116
	Apt Elev	1135

RNAV (RNP) Z RWY 7L

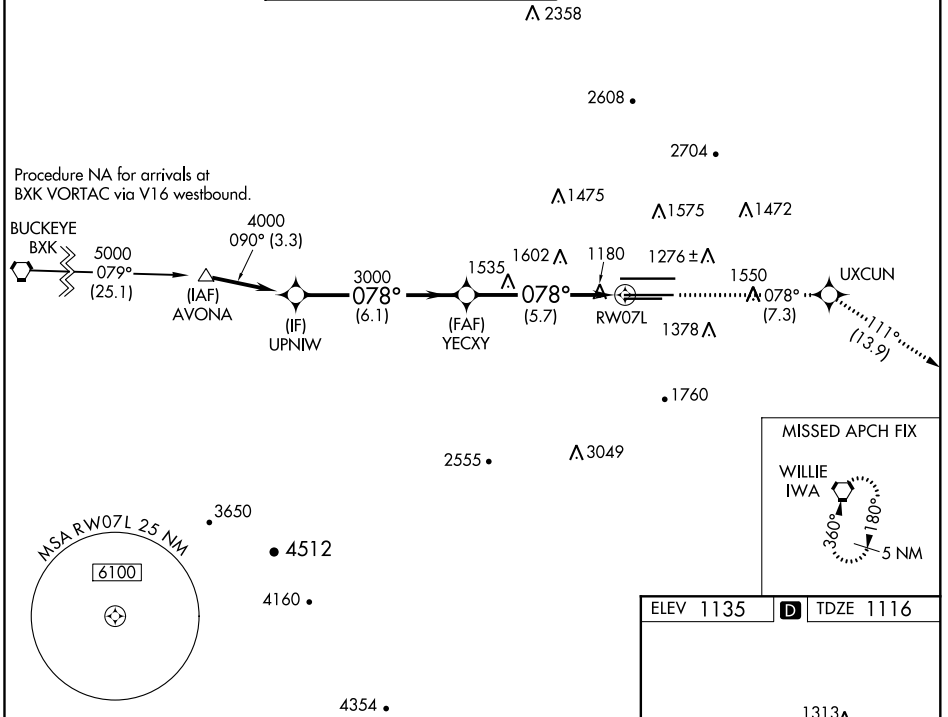
PHOENIX SKY HARBOR INTL (PHX)

▽ GPS required. Visibility reduction by helicopters NA. For uncompensated Baro-VNAV systems, procedure NA below 1°C (34°F) or above 46°C (116°F). For inoperative MALSRS, increase RNP 0.30 all Cats visibility to 1½ mile. Simultaneous approach authorized with ILS or LOC Rwy 8. Use of FD or AP providing RNAV track guidance required during simultaneous operations.

MALSRS

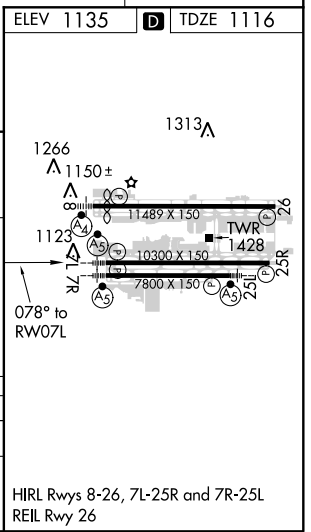
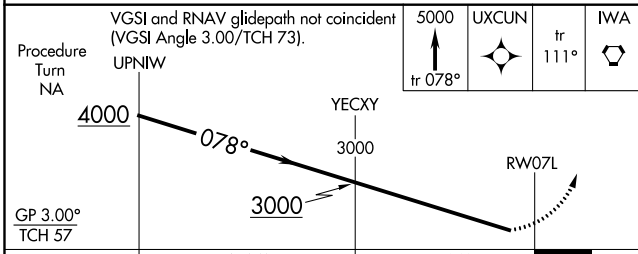
MISSED APPROACH:
Climb to 5000 via track 078° to UXCUN and via track 111° to IWA VORTAC and hold.

D-ATIS 127.575	PHOENIX APP CON 128.65 353.9	PHOENIX TOWER 118.7 278.8 (Rwy 8-26) 120.9 254.3 (Rwy 7L-25R, 7R-25L)	GND CON 119.75 269.2 (N) 132.55 269.2 (S)	CLNC DEL 118.1 269.2	CPDLC
--------------------------	--	---	---	--------------------------------	-------



SW-4, 25 FEB 2021 to 25 MAR 2021

SW-4, 25 FEB 2021 to 25 MAR 2021



CATEGORY	A	B	C	D
RNP 0.30 DA	1523/50 407 (400-1)			

AUTHORIZATION REQUIRED