


APP CRS	Rwy Idg	<b>7800</b>
<b>078°</b>	TDZE	<b>1116</b>
	Apt Elev	<b>1135</b>

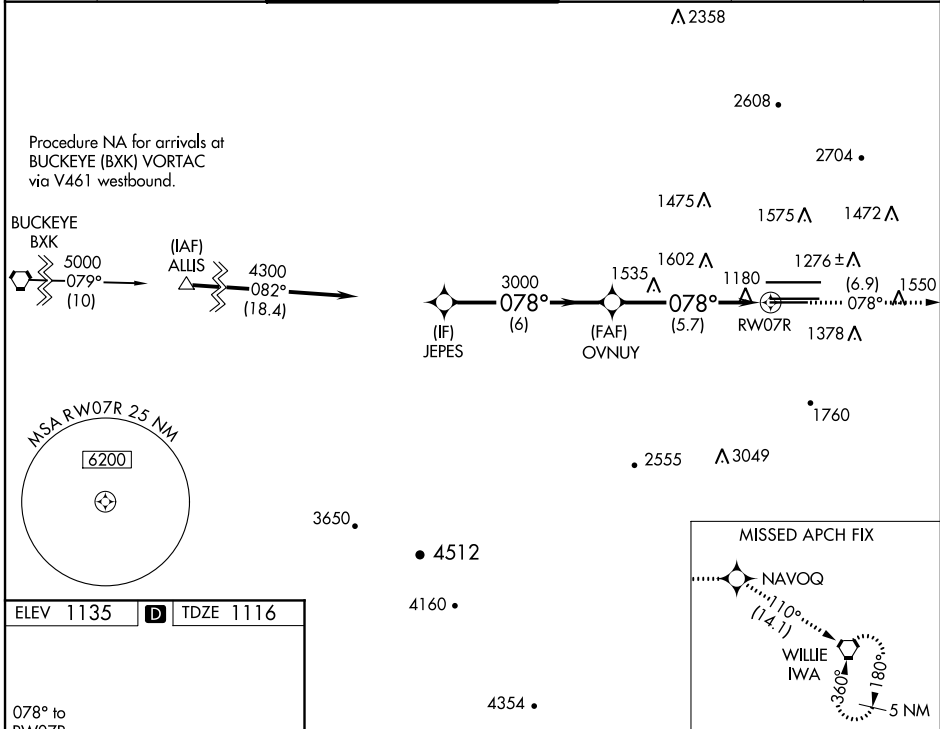
# RNAV (RNP) Z RWY 7R

PHOENIX SKY HARBOR INTL (PHX)

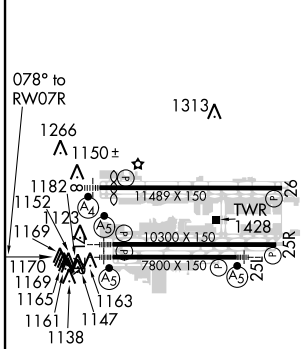
**▼** GPS required. For uncompensated Baro-VNAV systems, procedure NA below 1°C (34°F) or above 46°C (116°F). For inoperative MALSR, increase RNP 0.30 all Cats visibility to 1½. Simultaneous approach authorized with ILS or LOC Rwy 8. Use of FD or AP providing RNAV track guidance required during simultaneous operations.

<b>MALSR</b> 	<b>MISSED APPROACH:</b> Climb to 5000 via track 078° to NAVOQ and via track 110° to IWA VORTAC and hold.
---	--

D-ATIS <b>127.575</b>	PHOENIX APP CON <b>128.65 353.9</b>	PHOENIX TOWER <b>118.7 278.8</b> (Rwy 8-26) <b>120.9 254.3</b> (Rwy 7L-25R, 7R-25L)	GND CON <b>119.75 269.2</b> (N) <b>132.55 269.2</b> (S)	CLNC DEL <b>118.1 269.2</b>	CPDLC
--------------------------	--	---	---	--------------------------------	-------



ELEV 1135	<b>D</b>	TDZE 1116
-----------	----------	-----------



Procedure Turn NA	GP 3.00°	TCH 57	6 NM	5.7 NM	5000	tr 078°	NAVOQ	tr 110°	IWA
CATEGORY	A	B	C	D	VGSI and RNAV glidepath not coincident (VGSI Angle 3.00/TCH 70).				
RNP 0.30 DA	1523-1 407 (400-1)								

AUTHORIZATION REQUIRED

SW-4, 25 FEB 2021 to 25 MAR 2021

SW-4, 25 FEB 2021 to 25 MAR 2021