

APP CRS	Rwy Idg	<b>10591</b>
<b>078°</b>	TDZE	<b>1118</b>
	Apt Elev	<b>1135</b>

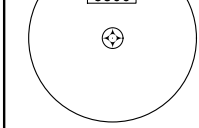
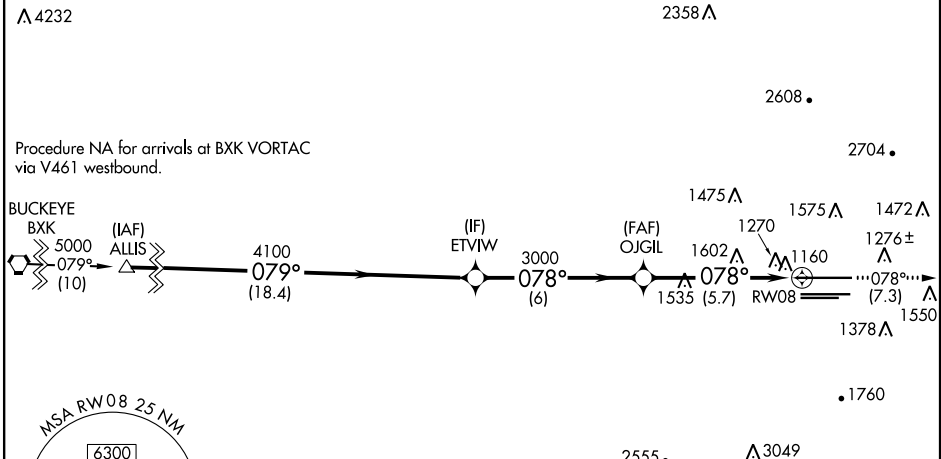
# RNAV (RNP) Z RWY 8

PHOENIX SKY HARBOR INTL (PHX)

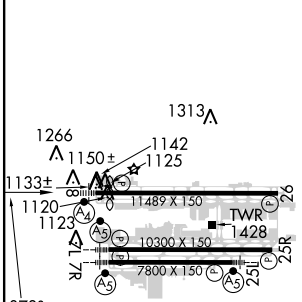
▼ GPS required. Visibility reduction by helicopters NA.  
 For uncompensated Baro-VNAV systems, procedure NA below 1°C (34°F) or above 46°C (116°F).  
 For inoperative MALSF, increase RNP 0.13 all Cats visibility to 1¼, and RNP 0.30 all Cats visibility to 1¾.

MALSF MISSED APPROACH: Climb to 5000 via track 078° to YOKXO and via track 114° to IWA VORTAC and hold.

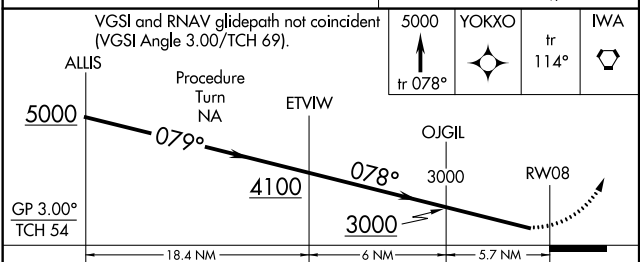
D-ATIS	PHOENIX APP CON	PHOENIX TOWER	GND CON	CLNC DEL	CPDLC
<b>127.575</b>	<b>128.65 353.9</b>	<b>118.7 278.8</b> (Rwy 8-26) <b>120.9 254.3</b> (Rwy 7L-25R, 7R-25L)	<b>119.75 269.2</b> (N) <b>132.55 269.2</b> (S)	<b>118.1 269.2</b>	



ELEV	<b>1135</b>	<b>D</b>	TDZE	<b>1118</b>
------	-------------	----------	------	-------------



HIRL Rwy 8-26, 7L-25R and 7R-25L  
 REIL Rwy 26



CATEGORY	A	B	C	D
RNP 0.13 DA	1478-1 360 (400-1)			
RNP 0.30 DA	1603-1½ 485 (500-1½)			

**AUTHORIZATION REQUIRED**

SW-4, 25 FEB 2021 to 25 MAR 2021

SW-4, 25 FEB 2021 to 25 MAR 2021