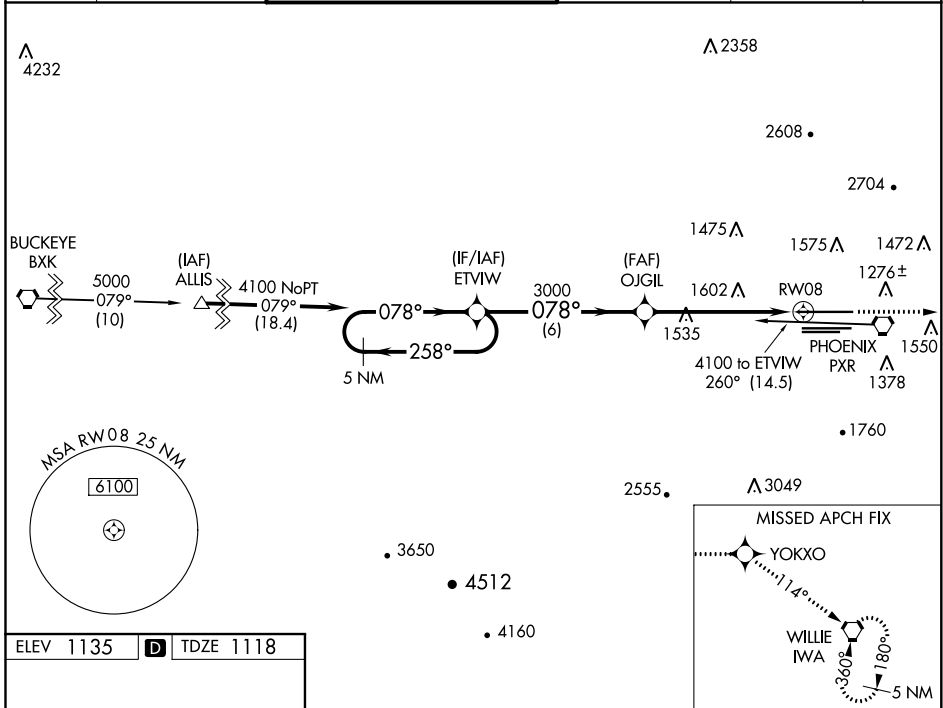


WAAS CH <b>86611</b> <b>W08A</b>	APP CRS <b>078°</b>	Rwy Idg <b>10591</b> TDZE <b>1118</b> Apt Elev <b>1135</b>
--	------------------------	--

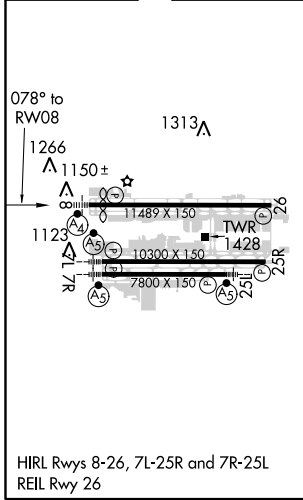
# RNAV (GPS) Y RWY 8

PHOENIX SKY HARBOR INTL (PHX)

<p>Inoperative table does not apply. DME/DME RNP-0.3 NA. Rwy 8 helicopter visibility reduction below 1 SM NA.</p>	<p>MISSED APPROACH: Climb to 5000 direct YOKXO and via 114° track to IWA VORTAC and hold.</p>				
	D-ATIS <b>127.575</b>	PHOENIX APP CON <b>128.65 353.9</b>	PHOENIX TOWER <b>118.7 278.8</b> (Rwy 8-26) <b>120.9 254.3</b> (Rwy 7L-25R, 7R-25L)	GND CON <b>119.75 269.2</b> (N) <b>132.55 269.2</b> (S)	CLNC DEL <b>118.1 269.2</b>

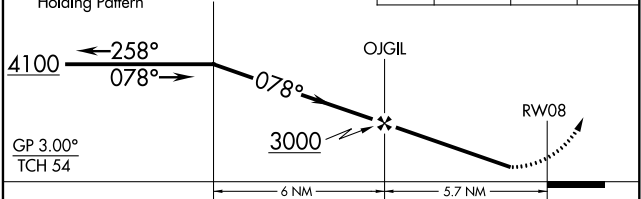


ELEV 1135	<b>D</b>	TDZE 1118
-----------	----------	-----------



VGSI and RNAV glidepath not coincident (VGSI Angle 3.00/TCH 69).

5 NM Holding Pattern



CATEGORY	A	B	C	D
LPV DA	1394-1 276 (300-1)			
LNAV MDA	1860-1 742 (800-1)	1860-1¼ 742 (800-1¼)	1860-2¼ 742 (800-2¼)	1860-2½ 742 (800-2½)
<b>C</b> CIRCLING	1860-1 725 (800-1)	1860-1¼ 725 (800-1¼)	2040-2¾ 905 (1000-2¾)	2560-3 1425 (1500-3)

SW-4, 25 FEB 2021 to 25 MAR 2021

SW-4, 25 FEB 2021 to 25 MAR 2021