

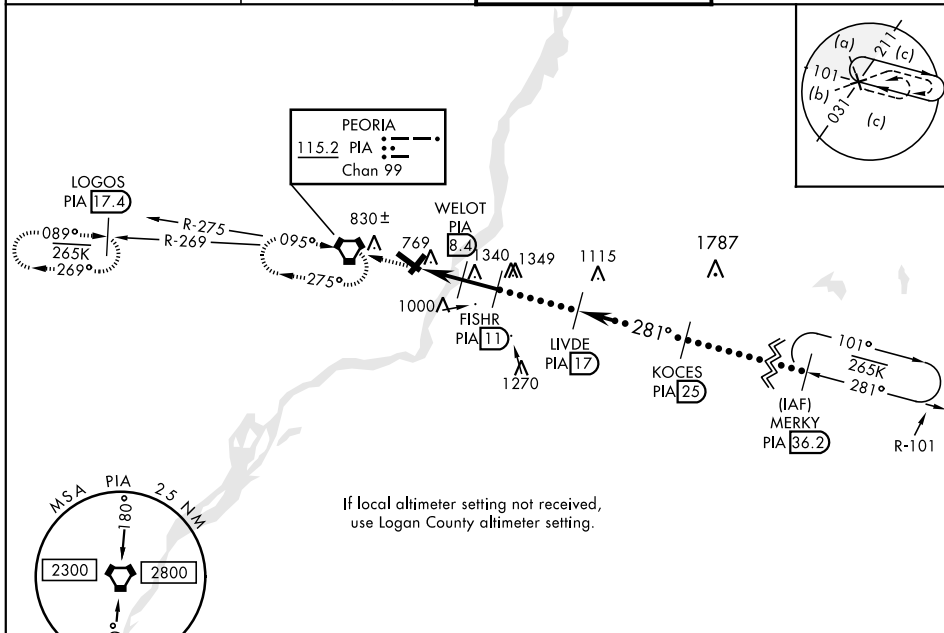
PEORIA, ILLINOIS

# HI-VOR/DME or TACAN RWY 31

VORTAC PIA <b>115.2</b> Chan <b>99</b>	APCH CRS <b>281°</b>	Rwy ldg <b>10,104</b> TDZE <b>651</b> Arpt Elev <b>661</b>	JAL 597 [USAF] GENERAL DOWNING - PEORIA INTL (KPIA)
--	-------------------------	--	---

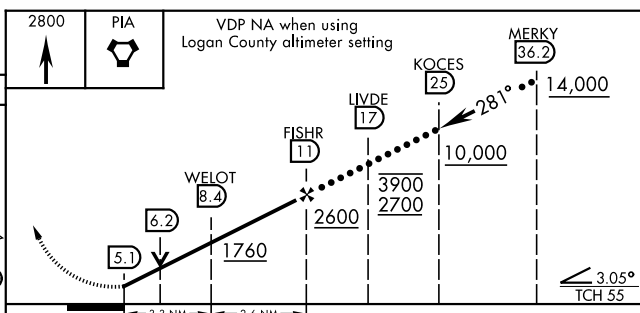
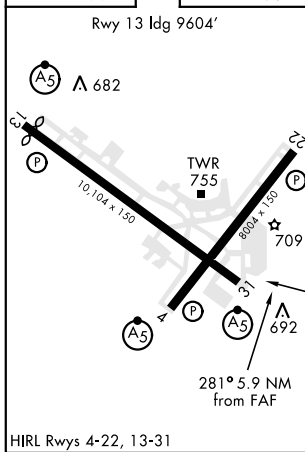
**M** MISSED APPROACH: Climb to 2800, direct PIA VORTAC and hold. Continue climb-in-hold to 2800. (TACAN aircraft: continue via PIA R-269 to LOGOS INT/PIA 17.4 DME and hold West, right turn 089° inbound).

ATIS <b>126.1 282.2</b>	PEORIA APP CON <b>125.8 269.2</b> (305°-125°) <b>124.675 317.55</b> (126°-304°)	PEORIA TOWER <b>124.0 353.85</b>	GND CON <b>121.85 348.6</b>
----------------------------	---	-------------------------------------	--------------------------------



EMERG SAFE ALT 100 NM 3300

ELEV 661	TDZE 651
----------	----------



CATEGORY	C	D	E
S-31	1040/50 389 (400-1)	1040/60 389	(400-1¼)
CIRCLING	1160-1½ 499 (500-1½)	1220-2 559 (600-2)	1680-3 1019 (1100-3)
LOGAN COUNTY ALTIMETER MINIMA			
S-31	1140/50 489 (500-1)	1140/60 489	(500-1¼)
CIRCLING	1260-1½ 599 (600-1½)	1320-2 659 (700-2)	1780-3 1119 (1200-3)

PEORIA, ILLINOIS 40°40'N-89°42'W GENERAL DOWNING - PEORIA INTL (KPIA)

# HI-VOR/DME or TACAN RWY 31



EC-3, 25 FEB 2021 to 25 MAR 2021

EC-3, 25 FEB 2021 to 25 MAR 2021

Andt 1A 30APR15