


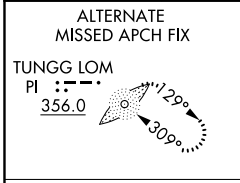
LOC/DME I-RNX 110.55 Chan 42(Y)	APP CRS 041°	Rwy Idg 7826 TDZE 652 Apt Elev 661
--	------------------------	---

ILS RWY 4 (SA CAT I & II)
GENERAL DOWNING-PEORIA INTL(PIA)

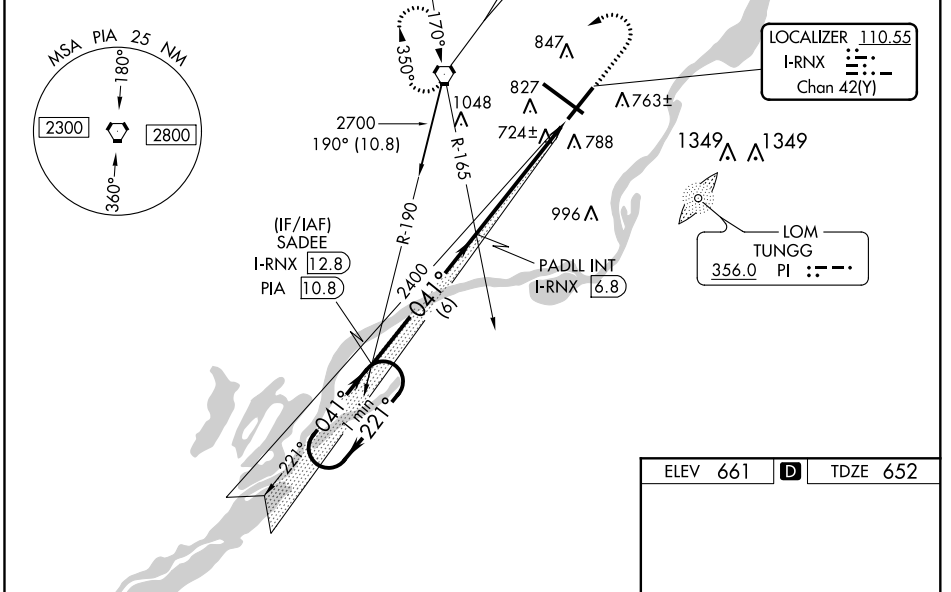
⚠ SA CAT I: Requires specific OPSPEC, MSPEC, or LOA approval and use of HUD to DH. SA CAT II: Reduced Lighting: Requires specific OPSEPC, MSPEC, or LOA approval and use of Autoland or HUD to touchdown.

MALSR
AS 
MISSED APPROACH: Climb to 1500 then climbing left turn to 2700 direct PIA VORTAC and hold.

ATIS 126.1 282.2	PEORIA APP CON (305°-125°) 124.675 317.55 (126°-304°)	PEORIA TOWER 124.0 353.85	GND CON 121.85 348.6
----------------------------	---	-------------------------------------	--------------------------------

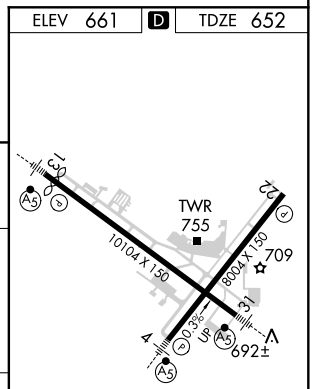
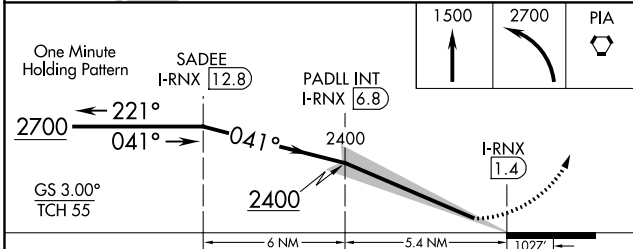


DME REQUIRED



EC-3, 25 FEB 2021 to 25 MAR 2021

EC-3, 25 FEB 2021 to 25 MAR 2021



CATEGORY	A	B	C	D
S-ILS 4	SA CAT I RA 162/14	150	DA 802	
S-ILS 4	SA CAT II RA 112/12	100	DA 752	

SA CATEGORY I & II ILS - SPECIAL AIRCREW & AIRCRAFT CERTIFICATION REQUIRED

HIRL Rwy 4-22 and 13-31