

LOM PI	APP CRS	Rwy Idg	10104
356	309°	TDZE	650
		Apt Elev	661

NDB RWY 31

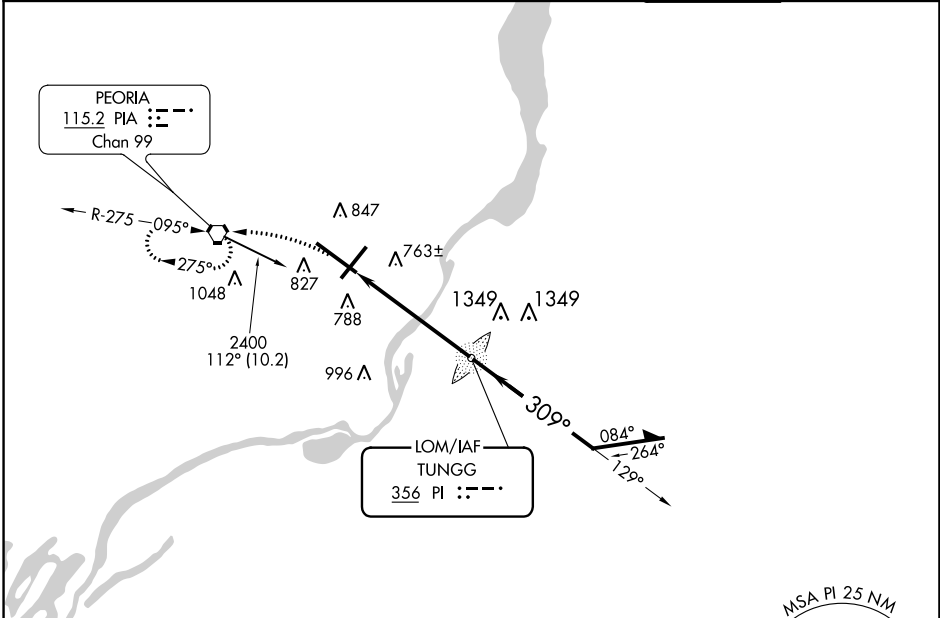
GENERAL DOWNING-PEORIA INTL (PIA)

⚠ For inop ALS, increase S-31 Cat A/B visibility to RVR 5500, and Cat C/D to 1 3/8 SM. When local altimeter setting not received, use Logan County altimeter setting and increase all MDA 100 feet, increase S-31 Cat C and D visibility 1/4 mile, and Circling Cat C 1/4 mile and Cat D 1/2 mile. Circling Rwy 13, 31 NA at night.

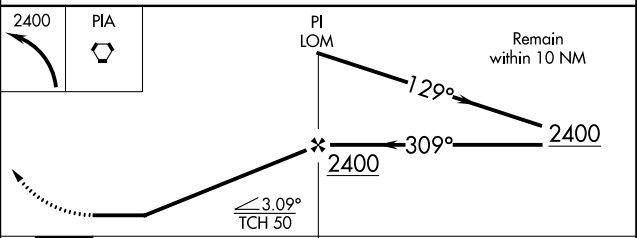
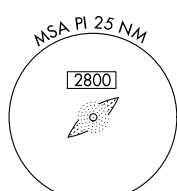
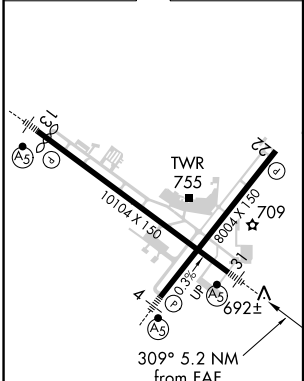


MISSED APPROACH: Climbing left turn 2400 direct PIA VORTAC and hold.

ATIS		PEORIA APP CON		PEORIA TOWER		GND CON	
126.1	282.2	125.8	269.2	124.0	353.85	121.85	348.6
		(305°-125°)		(126°-304°)			



ELEV	661	D	TDZE	650
------	------------	----------	------	------------



HIRL Rwy 4-22 and 13-31					
FAF to MAP 5.2 NM					
Knots	60	90	120	150	180
Min:Sec	5:12	3:28	2:36	2:05	1:44

CATEGORY	A	B	C	D
S-31	1140/40	490 (500-3/4)	1140/50	490 (500-1)
C CIRCLING	1160-1	499 (500-1)	1180-1 1/2 519 (600-1 1/2)	1400-2 1/4 739 (800-2 1/4)

EC-3, 25 FEB 2021 to 25 MAR 2021

EC-3, 25 FEB 2021 to 25 MAR 2021