

WAAS CH <b>53708</b> <b>W13A</b>	APP CRS <b>130°</b>	Rwy ldg <b>8001</b> TDZE <b>18</b> Apt Elev <b>19</b>
--	------------------------	---

# RNAV (GPS) RWY 13

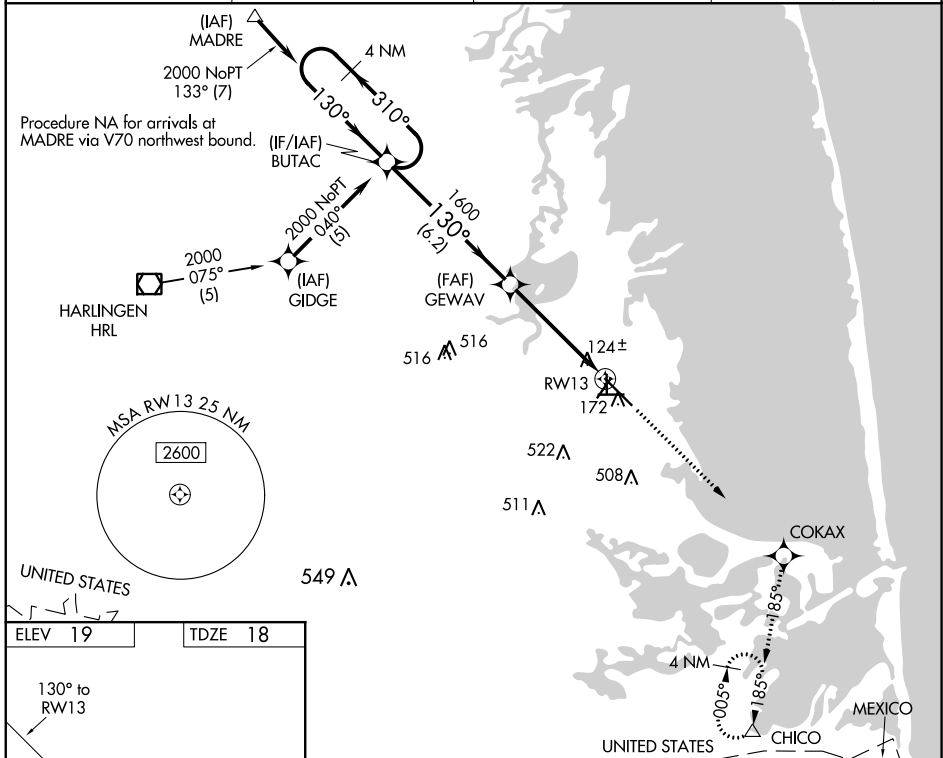
PORT ISABEL-CAMERON COUNTY (PIL)

RNP APCH

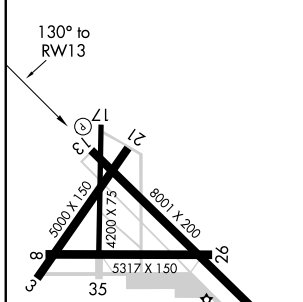
Baro-VNAV NA when using Brownsville altimeter setting. For uncompensated Baro-VNAV systems, LNAV/VNAV NA below -15°C or above 54°C. VDP NA when using Brownsville altimeter setting. When local altimeter setting not received, use Brownsville altimeter setting and increase all DA 38 feet and all MDA 40 feet, increase LPV all Cats, LNAV Cat C, and Circling Cat C visibility ¼ mile. Circling Rwy 3, 8, 17, 21, 26, 35 NA at night.

MISSED APPROACH:  
Climb to 3000 direct COKAX and via 185° track to CHICO and hold.

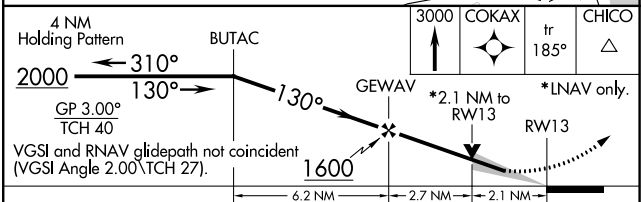
ASOS <b>118.525</b>	VALLEY APP CON <b>119.5 257.6</b>	CLNC DEL <b>119.2</b>	UNICOM <b>122.8</b> (CTAF)
------------------------	--------------------------------------	--------------------------	-------------------------------



ELEV <b>19</b>	TDZE <b>18</b>
----------------	----------------



REIL Rwy 13 and 31 MIRL Rwy 13-31
--------------------------------------



CATEGORY	A	B	C	D
LPV DA	376-1¼	358 (400-1¼)		NA
LNAV/VNAV DA	424-1½	406 (500-1½)		NA
LNAV MDA	480-1	462 (500-1)	480-1¼ 462 (500-1¼)	NA
<b>C</b> CIRCLING	540-1 521 (600-1)	620-1 601 (700-1)	840-2½ 821 (900-2½)	NA

SC-3, 25 FEB 2021 to 25 MAR 2021

SC-3, 25 FEB 2021 to 25 MAR 2021