

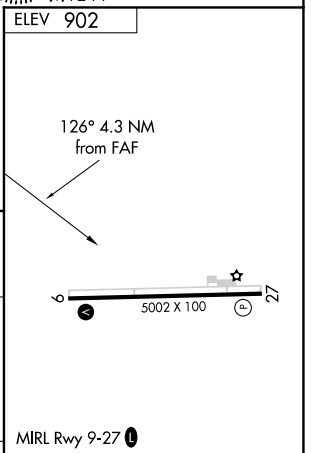
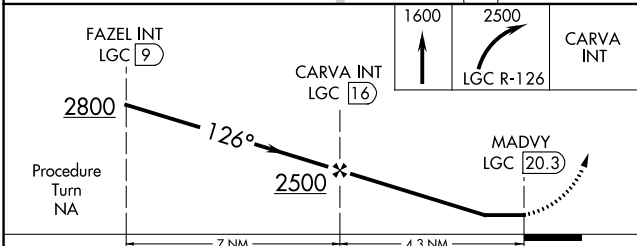
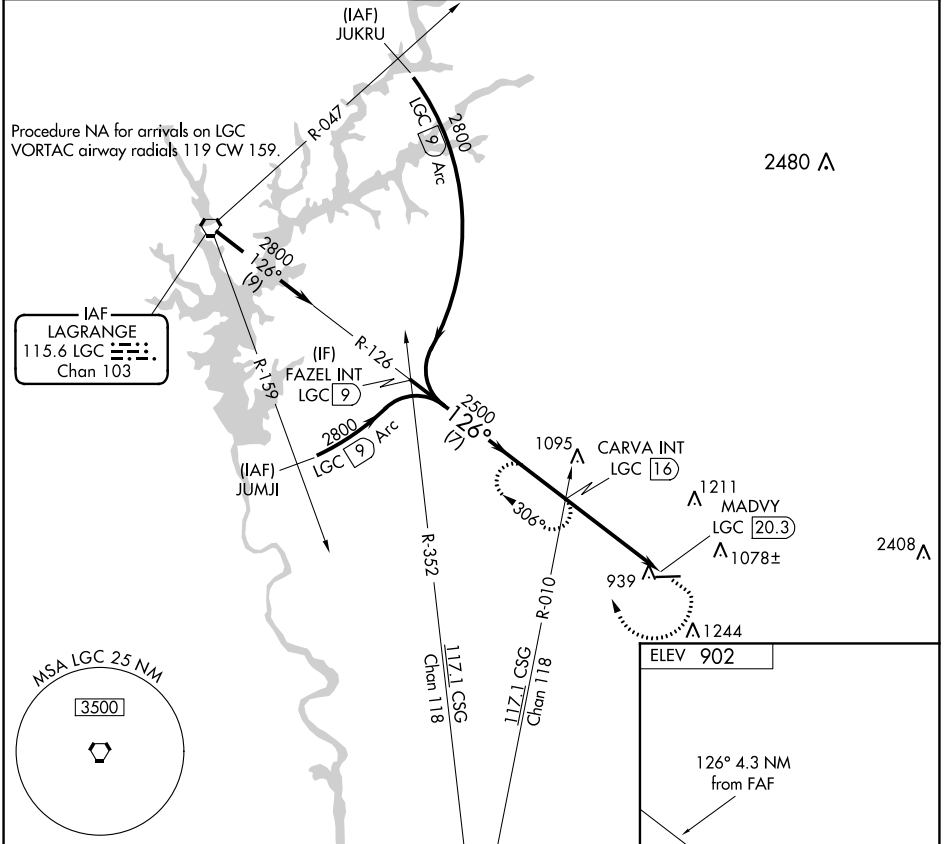
VORTAC LGC 115.6 Chan 103	APP CRS 126°	Rwy Idg TDZE Apt Elev N/A N/A 902
---	------------------------	---

VOR-A
HARRIS COUNTY (P1M)

▼ When local altimeter setting not received, use LaGrange altimeter setting.
▲ Circling Rwy 27 NA at night.

MISSED APPROACH: Climb to 1600 then climbing right turn to 2500 on LGC VORTAC R-126 to CARVA INT/LGC 16 DME and hold.

AWOS-3PT 120.275	LGC AWOS-3 126.325	ATLANTA APP CON* 125.5 323.1	CLNC DEL 127.7	GCO 121.725	UNICOM 122.8 (CTAF) 0
----------------------------	------------------------------	--	--------------------------	-----------------------	--



CATEGORY	A	B	C	D	FAF to MAP 4.3 NM					
CIRCLING	1480-1 578 (600-1)	1480-1¼ 578 (600-1¼)	1480-1½ 578 (600-1½)	1660-2½ 758 (800-2½)	Knots	60	90	120	150	180
					Min:Sec	4:18	2:52	2:09	1:43	1:26

SE-4, 25 FEB 2021 to 25 MAR 2021

SE-4, 25 FEB 2021 to 25 MAR 2021