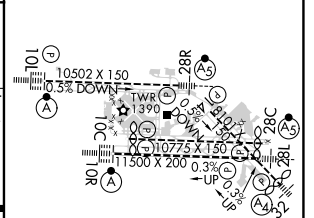
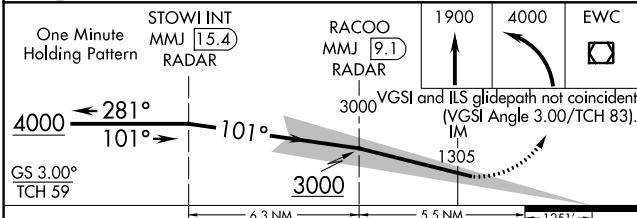
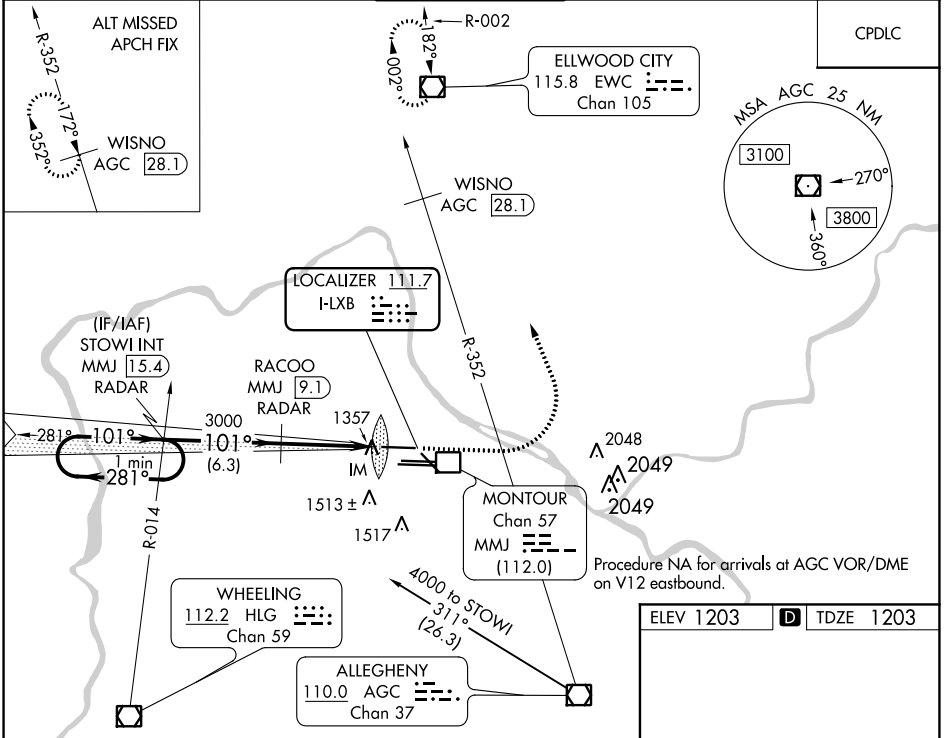


LOC I-LXB <b>111.7</b>	APP CRS <b>101°</b>	Rwy Idg <b>10502</b> TDZE <b>1203</b> Apt Elev <b>1203</b>
---------------------------	------------------------	--

# ILS RWY 10L (CAT II & III)

PITTSBURGH INTL (PIT)

<p>Simultaneous approach authorized. DME or RADAR required. CAT II: RVR 1000 authorized with specific OPSPEC, MSPEC, or LOA approval and use of autoland or HUD to touchdown. DME from MMJ DME. Simultaneous reception of I-LXB and MMJ DME required.</p>		<p>ALSf-2</p>	<p>MISSED APPROACH: Climb to 1900 then climbing left turn to 4000 direct EWC VOR/DME and hold.</p>	
<p>D-ATIS ARR <b>127.25</b> DEP <b>135.9</b></p>	<p>PITTSBURGH APP CON <b>123.95 360.8</b></p>	<p>PITTSBURGH TOWER <b>128.3 291.7</b></p>	<p>GND CON SOUTH <b>121.9 348.6</b> NORTH <b>127.8 348.6</b></p>	<p>CLNC DEL <b>126.75 353.7</b></p>



CATEGORY	A	B	C	D
S-ILS 10L	CAT II RA NA/12 100 DA 1303			
S-ILS 10L	CAT III RVR 06			

## CATEGORY II & III ILS - SPECIAL AIRCREW & AIRCRAFT CERTIFICATION REQUIRED

REIL Rwy 10C  
HIRL all Rwys  
TDZ/CL Rwys 10L, 10R, 28L, 28R, 28C, and 32

NE-4, 25 FEB 2021 to 25 MAR 2021

NE-4, 25 FEB 2021 to 25 MAR 2021