

| | | | | |
|---------------------------|------------------------|------------------------------|-----|-----|
| LOC I-PFS 108.9 | APP CRS 281° | Rwy Idg 11500 9707 | 28L | 28C |
| | | TDZE 1125 1134 | | |
| | | Apt Elev 1203 1203 | | |

ILS or LOC RWY 28L

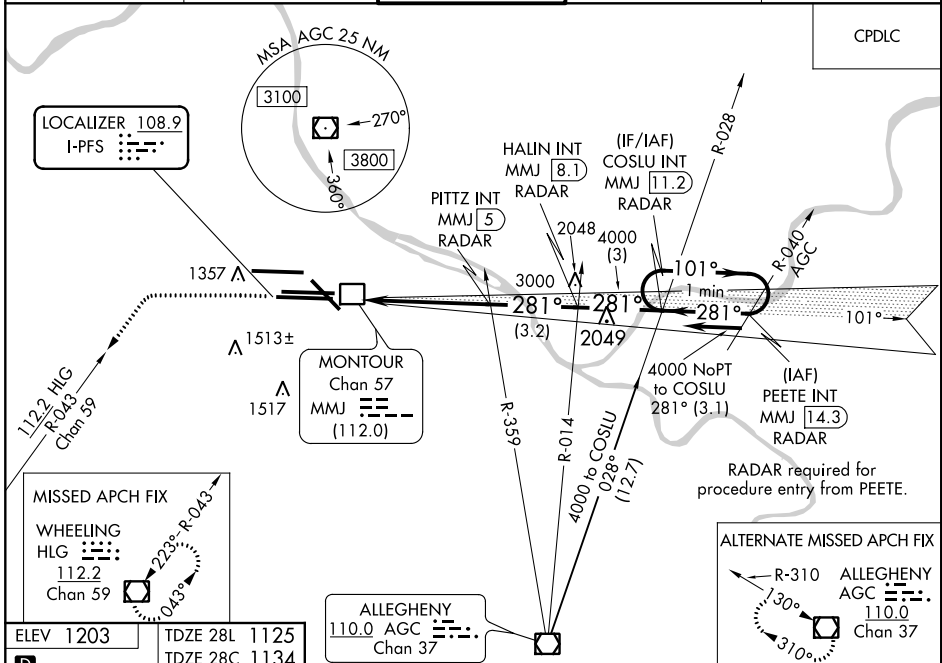
PITTSBURGH INTL (PIT)

Simultaneous approach authorized. For inop ALS, increase S-ILS 28L Cat E visibility to RVR 4000 and S-LOC 28L Cats C, D, E visibility to 1/2 SM. DME from MMJ DME. Simultaneous reception of I-PFS and MMJ DME required.

MALSRR

MISSED APPROACH: Climb to 4000 on heading 280° and HLG VOR/DME R-043 to HLG VOR/DME and hold.

| | | | | |
|---|---|--|---|---------------------------------|
| D-ATIS ARR 127.25 DEP 135.9 | PITTSBURGH APP CON 123.95 360.8 | PITTSBURGH TOWER 128.3 291.7 | GND CON SOUTH 121.9 348.6 NORTH 127.8 348.6 | CLNC DEL 126.75 353.7 |
|---|---|--|---|---------------------------------|



NE-4, 25 FEB 2021 to 25 MAR 2021

NE-4, 25 FEB 2021 to 25 MAR 2021

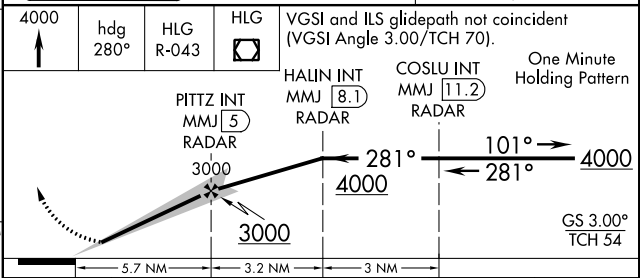
| | |
|-----------|---------------|
| ELEV 1203 | TDZE 28L 1125 |
| | TDZE 28C 1134 |

D

REIL Rwy 10C
HIRL all Rwys
TDZ/CL Rwys 10L, 10R, 28L, 28R,
28C, and 32

FAF to MAP 5.7 NM

| | | | | | |
|---------|------|------|------|------|------|
| Knots | 60 | 90 | 120 | 150 | 180 |
| Min:Sec | 5:42 | 3:48 | 2:51 | 2:17 | 1:54 |



| CATEGORY | A | B | C | D | E |
|-------------------|-----------------------|---------------|----------------------------|--------------------|---|
| S-ILS 28L | 1325/18 200 (200-1/2) | | | | |
| S-LOC 28L | 1700/24 | 575 (600-1/2) | 1700-1 1/4 575 (600-1 1/4) | | |
| SIDESTEP 28C | 1700-1 | 566 (600-1) | 1700-1 1/2 566 (600-1 1/2) | 1700-2 566 (600-2) | |
| C CIRCLING | 1700-1 497 (500-1) | | | | |