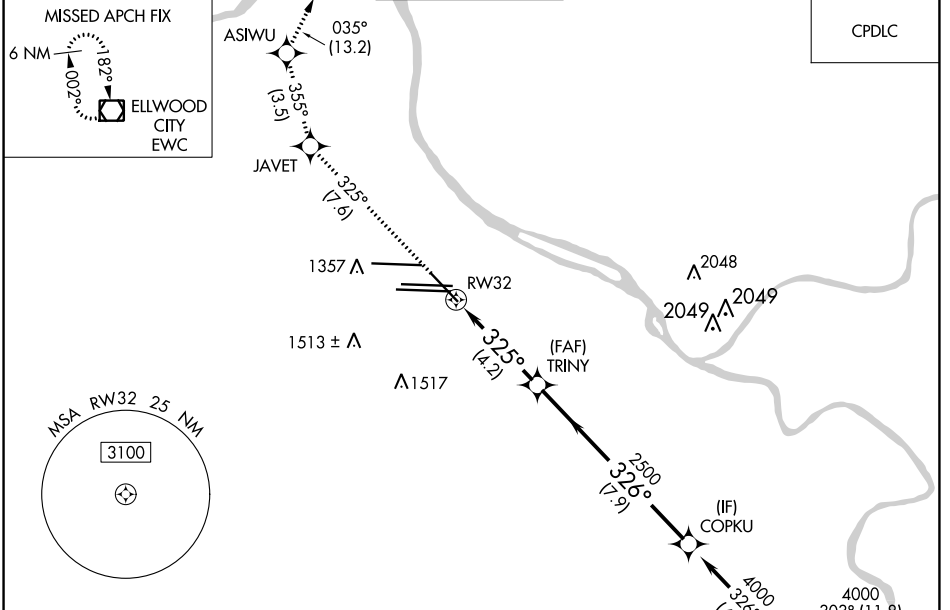


APP CRS <b>325°</b>	Rwy ldg <b>7466</b> TDZE <b>1124</b> Apt Elev <b>1203</b>
------------------------	---

# RNAV (RNP) Z RWY 32

PITTSBURGH INTL (PIT)

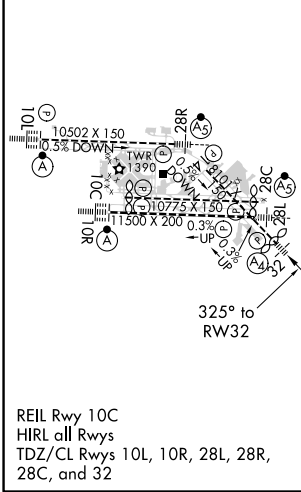
<p>For uncompensated Baro-VNAV systems, procedure NA below -18°C (0°F) or above 54°C (130°F). GPS required.</p>		<p>MALS</p>	<p>MISSED APPROACH: Climb to 4000 on track 325° to JAVET and track 355° to ASIWU and track 035° to EWC VOR/DME and hold.</p>	
<p>D-ATIS ARR <b>127.25</b> DEP <b>135.9</b></p>	<p>PITTSBURGH APP CON <b>123.95 360.8</b></p>	<p>PITTSBURGH TOWER <b>128.3 291.7</b></p>	<p>GND CON SOUTH <b>121.9 348.6</b> NORTH <b>127.8 348.6</b></p>	<p>CLNC DEL <b>126.75 353.7</b></p>



NE-4, 25 FEB 2021 to 25 MAR 2021

NE-4, 25 FEB 2021 to 25 MAR 2021

ELEV 1203	<b>D</b>	TDZE 1124
-----------	----------	-----------



4000	JAVET	tr 355°	ASIWU	tr 035°	EWC
fr 325°					
<p>VGSI and RNAV glidepath not coincident (VGSI Angle 3.00/TCH 72).</p>					
4000	TRINY	2500	COPKU	4000	
	RW32	2500			GP 3.00° TCH 37
	4.2 NM	7.9 NM			
CATEGORY	A	B	C	D	
RNP 0.30 DA	1503/40		379 (300-¾)		
<b>AUTHORIZATION REQUIRED</b>					