

WAAS CH 97326 W28B	APP CRS 281°	Rwy Idg TDZE Apt Elev	11500 1125 1203
---------------------------------	------------------------	-----------------------------	--

RNAV (GPS) Y RWY 28L

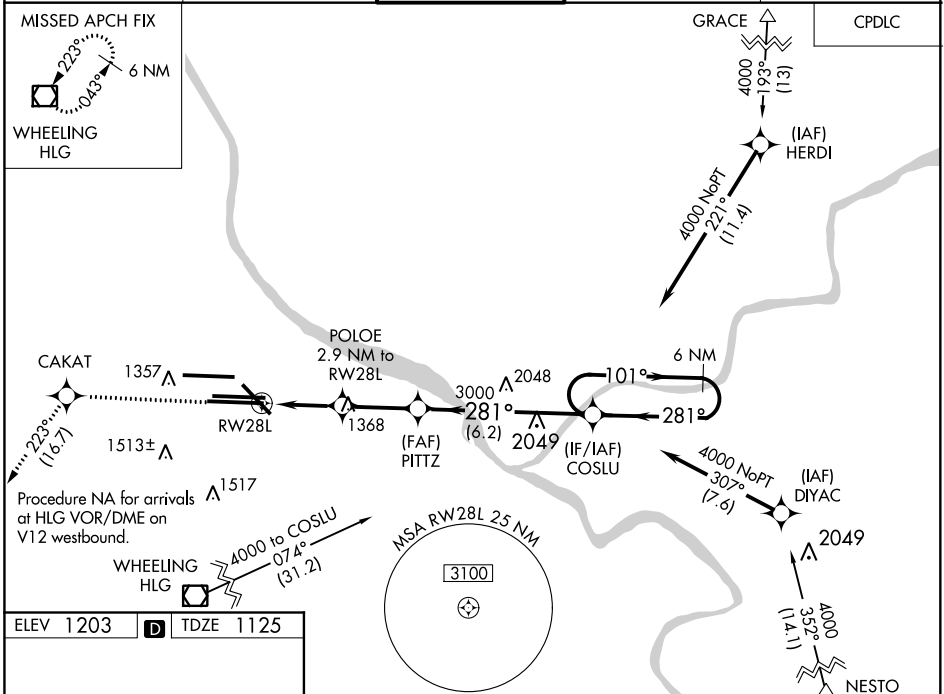
PITTSBURGH INTL (PIT)

▼ For uncompensated Baro-VNAV systems, LNAV/VNAV NA below -18°C (0°F) or above 54°C (130°F). DME/DME RNP-0.3 NA. For inop ALS, increase LNAV Cats C/D visibility to 1½ SM. LNAV procedure NA during simultaneous operations. Use of FD or AP required during simultaneous operations.

MALSR

MISSED APPROACH:
Climb to 4000 direct CAKAT and on track 223° to HLG VOR/DME and hold.

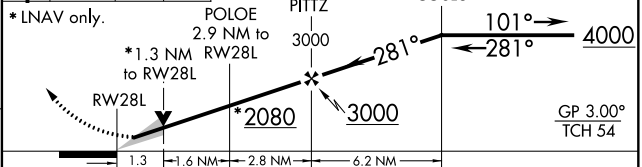
D-ATIS ARR 127.25 DEP 135.9	PITTSBURGH APP CON 123.95 360.8	PITTSBURGH TOWER 128.3 291.7	GND CON SOUTH 121.9 348.6 NORTH 127.8 348.6	CLNC DEL 126.75 353.7
---	---	--	---	---------------------------------



ELEV 1203	D	TDZE 1125
-----------	----------	-----------

REIL Rwy 10C
HIRL all Rws
TDZ/CL Rws 10L, 10R, 28L, 28R, 28C, and 32

4000 CAKAT tr 223° HLG VGSi and RNAV glidepath not coincident (VGSi Angle 3.00/TCH 70). 6 NM Holding Pattern



CATEGORY	A	B	C	D
LPV DA		1325/18	200 (200-½)	
LNAV/VNAV DA		1549/40	424 (400-¾)	
LNAV MDA	1600/24	475 (400-½)	1600/50	475 (400-1)
C CIRCLING	1700-1	497 (500-1)	1880-2 677 (700-2)	1880-2¼ 677 (700-2¼)

NE-4, 25 FEB 2021 to 25 MAR 2021

NE-4, 25 FEB 2021 to 25 MAR 2021