

| | | | |
|---------------------------|------------------------|-----------------------------|---|
| LOC I-PKB 110.7 | APP CRS 027° | Rwy Idg TDZE Apt Elev | 6780 830 859 |
|---------------------------|------------------------|-----------------------------|---|

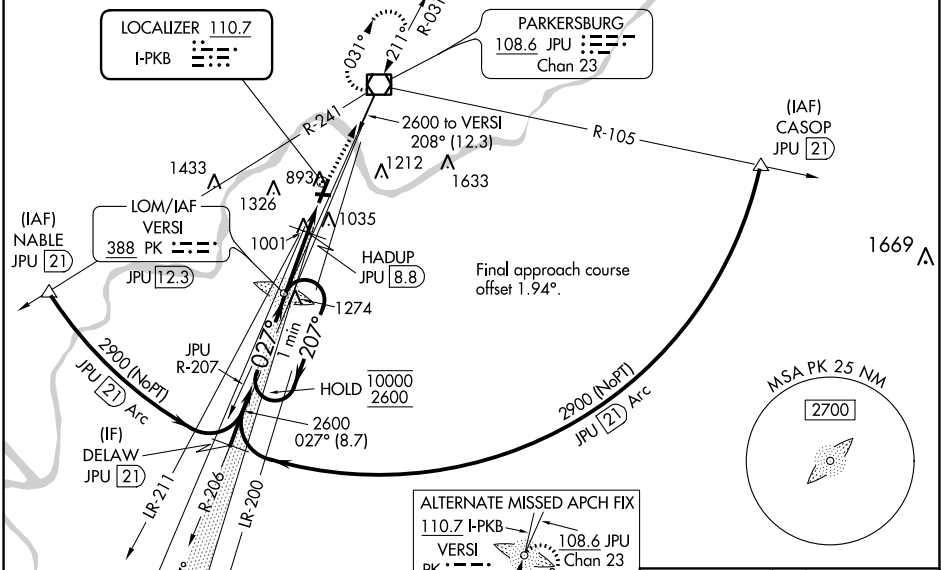
ILS or LOC RWY 3

MID-OHIO VALLEY RGNL (PKB)

NA Circling Rwy 10, 28 NA at night. Rwy 3 helicopter visibility reduction below RVR 4000 NA. When local altimeter setting not received, use Athens/Albany altimeter setting and increase all DA/MDA 100 feet; increase S-ILS 3 all Cats visibility to RVR 5000, S-LOC 3 Cats C/D to 1½ SM, S-LOC 3 HADUP fix minimums (DME required) Cats C/D to RVR 5500, and Circling Cat C ½ SM. For inop ALS, increase S-LOC 3 Cat A/B and S-LOC 3 HADUP fix minimums (DME required) Cat A/B visibility to RVR 5500. For inop ALS when using Athens/Albany altimeter setting, increase S-ILS 3 all Cats visibility to 1½ SM and S-LOC 3 all Cats and S-LOC 3 HADUP fix minimums (DME required) Cat A/B visibility to RVR 5500.

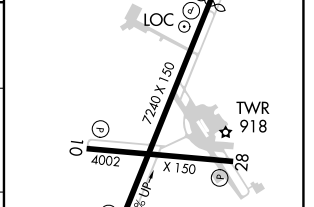
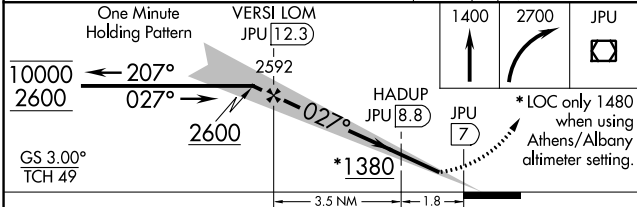
MALSRR
MISSED APPROACH: Climb to 1400 then climbing right turn to 2700 direct JPU VOR/DME and hold.

| | | | | |
|-----------------------|--|---|-------------------------|-------------------------|
| ATIS 124.35 | INDIANAPOLIS CENTER 125.55 398.9 | PARKERSBURG TOWER * 123.7 (CTAF) 257.8 | GND CON 121.7 | UNICOM 122.95 |
|-----------------------|--|---|-------------------------|-------------------------|



ALTERNATE MISSED APCH FIX
110.7 I-PKB
VERSI PK 388
JPU [12.3]
R-207 207°
R-207 207°

| | |
|-------------------------|-------------------|
| ELEV 859 | D TDZE 830 |
| HIRL Rwy 3-21 and 10-28 | |
| REIL Rwy 10, 21 | |
| REIL Rwy 28 | |



| CATEGORY | A | B | C | D |
|-----------------------------------|-------------|-------------|--------------|--------------|
| S-ILS 3 | | 1201/40 | 371 (400-¾) | |
| S-LOC 3 | 1380/40 | 550 (600-¾) | 1380/60 | 550 (600-1¼) |
| CIRCLING | 1380-1 | 521 (600-1) | 1380-1½ | 1420-2 |
| | | | 521 (600-1½) | 561 (600-2) |
| HADUP FIX MINIMUMS (DME REQUIRED) | | | | |
| S-LOC 3 | | 1260/40 | 430 (500-¾) | |
| CIRCLING | 1320-1 | 1340-1 | 1360-1½ | 1420-2 |
| | 461 (500-1) | 481 (500-1) | 501 (600-1½) | 561 (600-2) |

| | | | | | |
|-------------------|------|------|------|------|------|
| FAF to MAP 5.3 NM | | | | | |
| Knots | 60 | 90 | 120 | 150 | 180 |
| Min:Sec | 5:18 | 3:32 | 2:39 | 2:07 | 1:46 |

NE-4, 25 FEB 2021 to 25 MAR 2021

NE-4, 25 FEB 2021 to 25 MAR 2021