

WAAS CH 77906 W03A	APP CRS 030°	Rwy Idg 6780 TDZE 830 Apt Elev 859
--	------------------------	---

RNAV (GPS) RWY 3

MID-OHIO VALLEY RGNL (PKB)

RNP APCH.

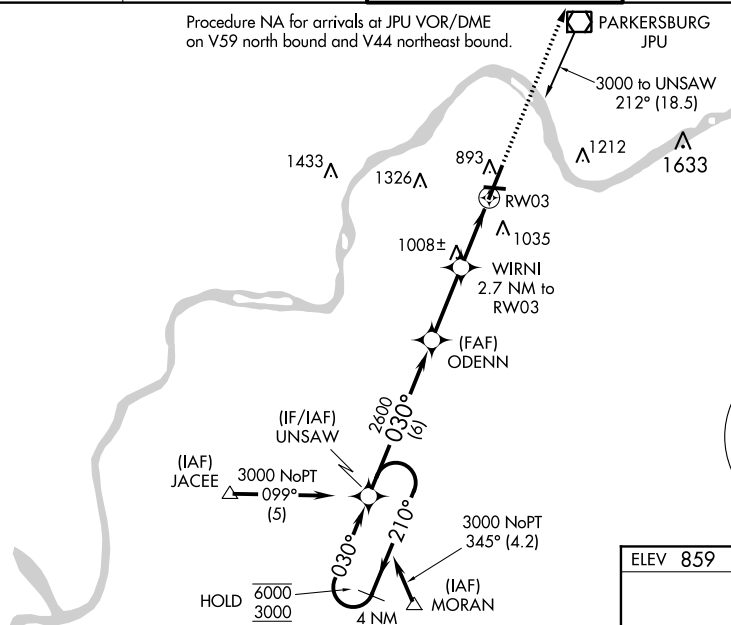
- ▼ Circling Rwy 10, 28 NA at night. Rwy 3 helicopter visibility reduction below RVR 4000 NA.
- ▲ For uncompensated Baro-VNAV systems, LNAV/VNAV NA below -17°C or above 38°C.
- ▲ When local altimeter setting not received, use Athens/Albany altimeter setting and increase all DA/MDA 100 feet and LPV all Cats visibility to RVR 5000, LNAV/VNAV all Cats visibility to 1 3/8 SM, LNAV Cats C/D visibility to RVR 5500 and Circling Cat C visibility to 1 3/4 SM.
- For inop ALS, increase LNAV/VNAV all Cats visibility to 1 3/8 SM and LNAV Cats A/B visibility to RVR 5500. For inop ALS, when using Athens/Albany altimeter setting, increase LPV all Cats visibility to 1 3/8 SM and LNAV/VNAV all Cats visibility to 1 3/4 SM.



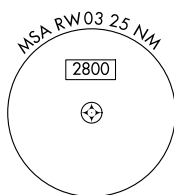
MISSED APPROACH:
Climb to 3000 direct
OWAVE and hold.

ATIS 124.35	INDIANAPOLIS CENTER 125.55 398.9	PARKERSBURG TOWER * 123.7 (CTAF) 257.8	GND CON 121.7	UNICOM 122.95
-----------------------	--	--	-------------------------	-------------------------

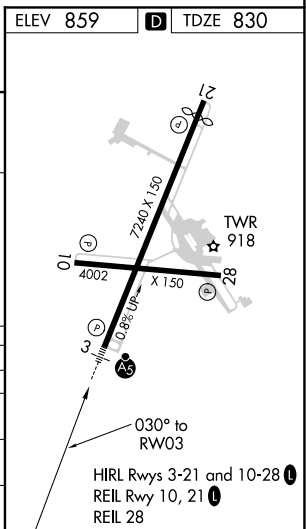
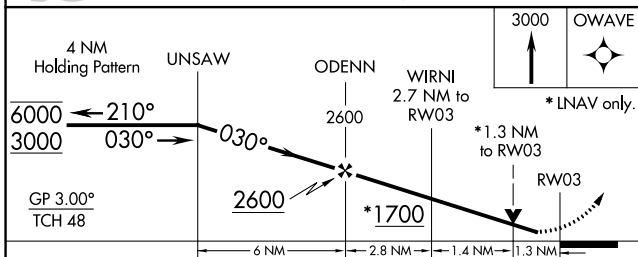
Procedure NA for arrivals at JPU VOR/DME on V59 north bound and V44 northeast bound.



MISSED APCH FIX



ELEV 859 **D** TDZE 830



CATEGORY	A	B	C	D
LPV DA		1202/40	372 (400-3/4)	
LNAV/VNAV DA		1336/60	505 (500-1 1/4)	
LNAV MDA		1260/40	430 (500-3/4)	
CIRCLING	1320-1 461 (500-1)	1340-1 481 (500-1)	1360-1 1/2 501 (600-1 1/2)	1420-2 561 (600-2)

NE-4, 25 FEB 2021 to 25 MAR 2021

NE-4, 25 FEB 2021 to 25 MAR 2021