

VOR/DME JPU	APP CRS	Rwy Idg	6780
108.6	211°	TDZE	857
Chan 23		Apt Elev	859

VOR RWY 21

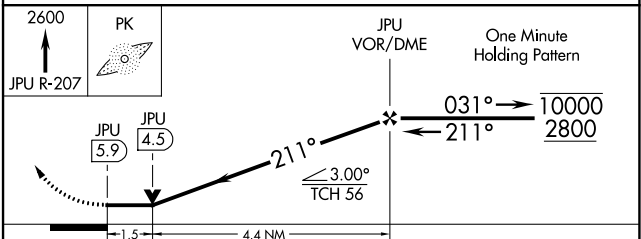
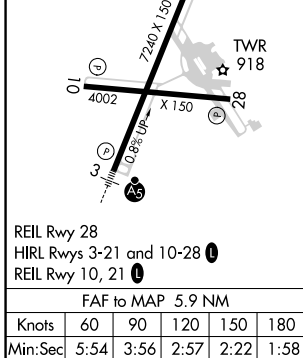
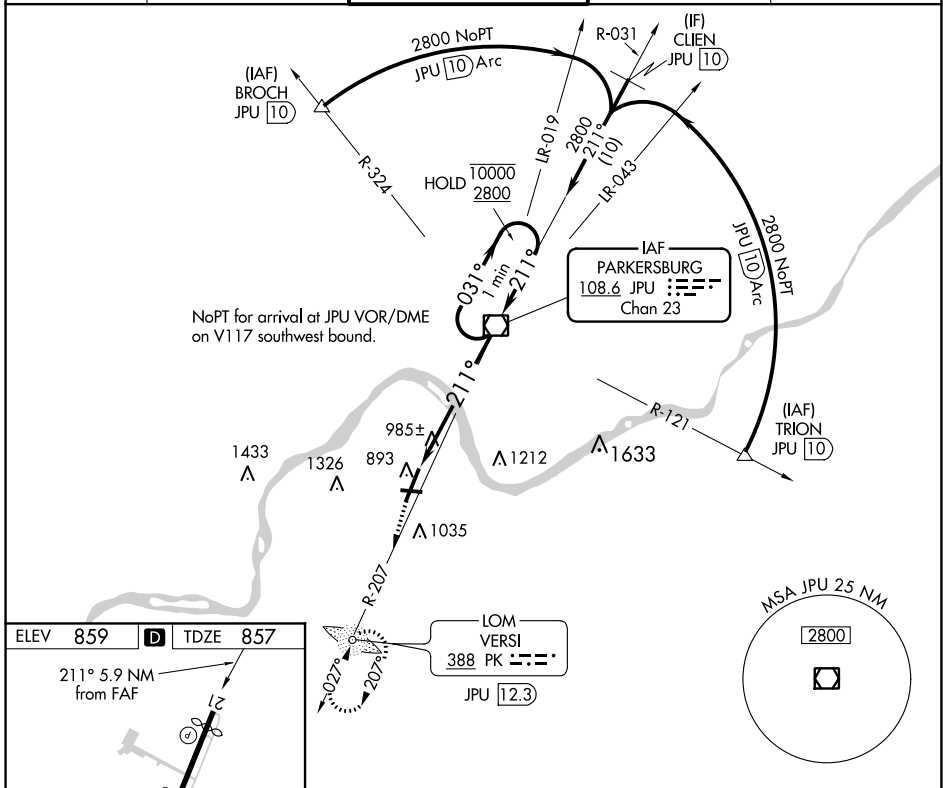
MID-OHIO VALLEY RGNL (PKB)

ADF or DME required.

⚠ Circling Rwy 10, 28 NA at night. Rwy 21 helicopter visibility reduction below ¼ SM NA. VDP NA when using Athens/Albany altimeter setting. When local altimeter setting not received, use Athens/Albany altimeter setting and increase all MDA 100 feet, increase S-21 and Circling Cat C visibility ¼ SM.

⚠ MISSED APPROACH: Climb to 2600 on JPU VOR/DME R-207 to VERSI LOM/JPU 12.3 DME and hold.

ATIS 124.35	INDIANAPOLIS CENTER 125.55 398.9	PARKERSBURG TOWER* 123.7 (CTAF) 257.8	GND CON 121.7	UNICOM 122.95
-----------------------	--	---	-------------------------	-------------------------



CATEGORY	A	B	C	D
S-21	1380-1 523 (600-1)		1380-1½ 523 (600-1½)	1380-1¾ 523 (600-1¾)
CIRCLING	1380-1 521 (600-1)		1380-1½ 521 (600-1½)	1420-2 561 (600-2)

NE-4, 25 FEB 2021 to 25 MAR 2021

NE-4, 25 FEB 2021 to 25 MAR 2021