

WAAS CH 63225 W09A	APP CRS 092°	Rwy Idg TDZE Apt Elev	4002 922 925
--	------------------------	-----------------------------	---

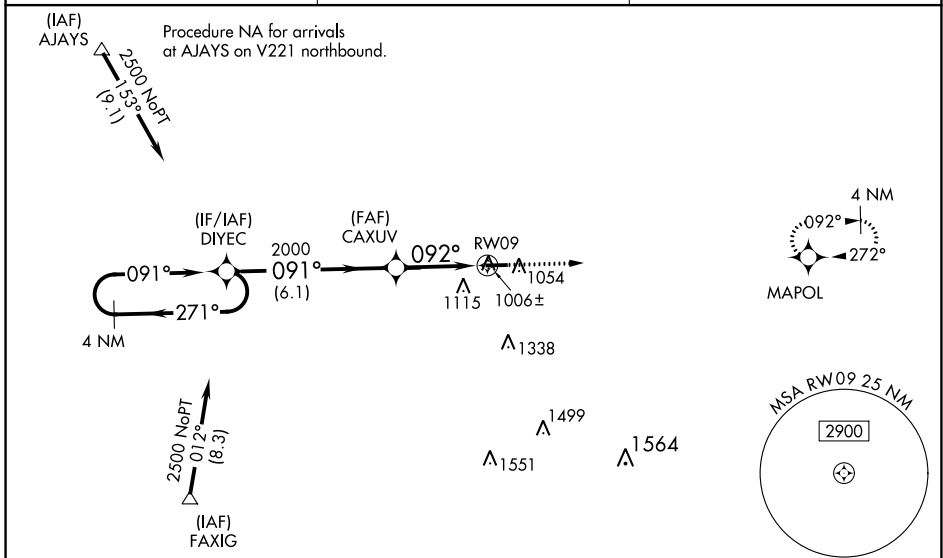
RNAV (GPS) RWY 9

PORTLAND MUNI (PLD)

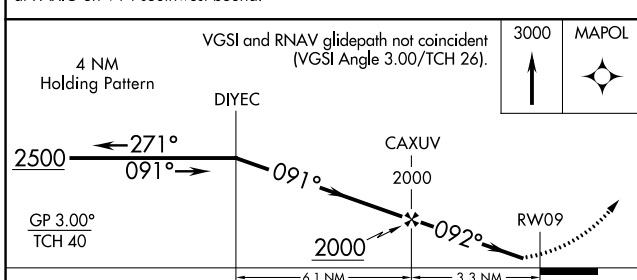
Baro-VNAV NA when using Fort Wayne Intl altimeter setting. For uncompensated Baro-VNAV systems, LNAV/VNAV NA below -16°C (4°F) or above 54°C (130°F). DME/DME RNP-0.3 NA. Helicopter visibility reduction below 1 SM NA. When local altimeter setting not received, use Fort Wayne Intl altimeter setting and increase LPV DA to 1255, LNAV/VNAV DA to 1320 and all MDA 100 feet, increase LPV all Cats visibility 1/8 mile, LNAV/VNAV all Cats and LNAV Cat C visibility 3/8 mile and Circling Cat C visibility 1/4 mile. When VGSI inop, Straight-in/ Circling Rwy 9 procedure NA at night. When VGSI inop, Circling Rwy 27 NA at night.

MISSED APPROACH:
Climb to 3000 direct MAPOL and hold.

AWOS-3 124.675	FORT WAYNE APP CON 132.15 (SE/NE) 284.6 127.2 (SW/NW) 284.6	UNICOM 122.8 (CTAF) 0
--------------------------	---	---------------------------------



Procedure NA for arrivals at FAXIG on V14 southwest bound.



ELEV 925	TDZE 922
----------	----------

0.3% UP → 4002 X 75

986±, 981±, 1066△

092° to RW09

MIRL Rwy 9-27 0
REIL Rws 9 and 27 0

EC-2, 25 FEB 2021 to 25 MAR 2021

EC-2, 25 FEB 2021 to 25 MAR 2021