

RNAV (GPS) RWY 12

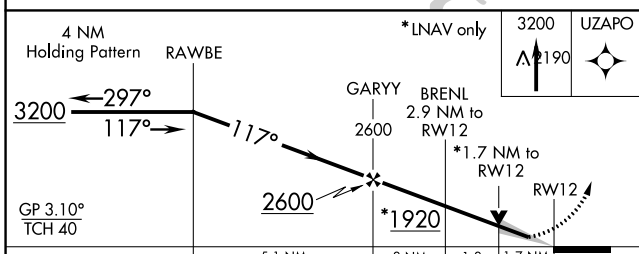
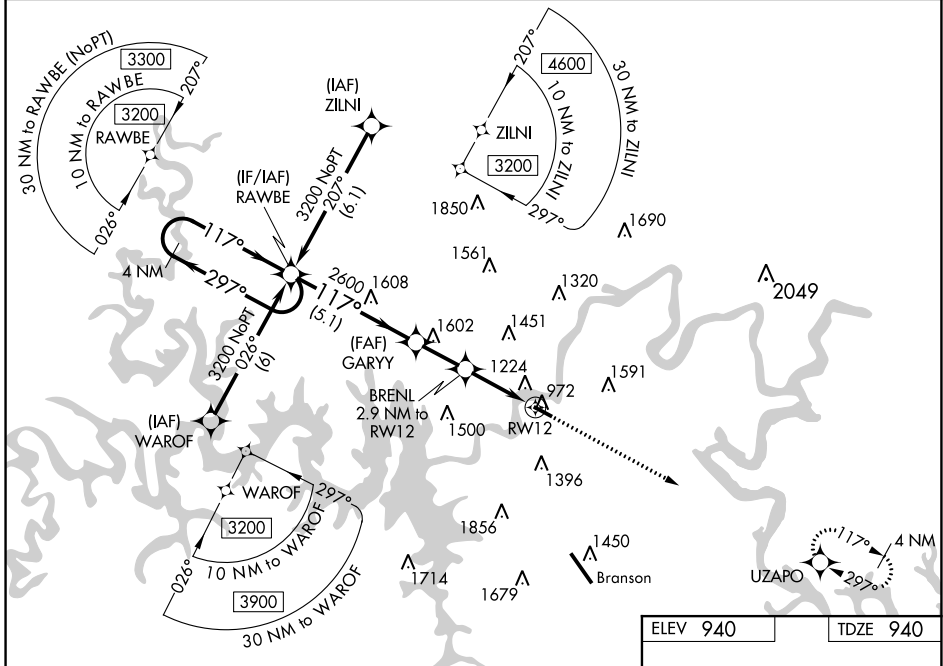
M GRAHAM CLARK DOWNTOWN (PLK)

WAAS CH 78220 W12A	APP CRS 117°	Rwy Idg TDZE Apt Elev	3449 940 940
--	------------------------	-----------------------------	---

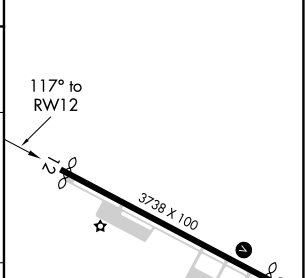
NA Baro-VNAV NA when using Branson altimeter setting. For uncompensated Baro-VNAV systems, LNAV/VNAV NA below -16°C (4°F) or above 54°C (130°F). DME/DME RNP-0.3 NA. VDP NA with Branson altimeter setting. Obtain local altimeter setting on CTAF; when not received, use Branson altimeter setting and increase all DA 65 feet and all MDA 80 feet; increase LPV all Cats visibility 1/8 mile and LNAV/VNAV all Cats visibility 1/4 mile.

MISSED APPROACH:
Climb to 3200 direct UZAPO and hold.

SPRINGFIELD APP CON 126.35	UNICOM 122.7 (CTAF) 0
--------------------------------------	---------------------------------



ELEV 940	TDZE 940
----------	----------



CATEGORY	A	B	C	D
LPV DA	1140-3/4	200 (200-3/4)		NA
LNAV/VNAV DA	1416-1 5/8	476 (500-1 5/8)		NA
LNAV MDA	1540-1	600 (600-1)		NA
CIRCLING	1560-1	620 (700-1)		NA

REIL Rws 12 and 30
MIRL Rwy 12-30

NC-3, 25 FEB 2021 to 25 MAR 2021

NC-3, 25 FEB 2021 to 25 MAR 2021