

LOC I-PLN <b>111.3</b>	APP CRS <b>321°</b>	Rwy Idg <b>6513</b> TDZE <b>712</b> Apt Elev <b>721</b>
---------------------------	------------------------	---

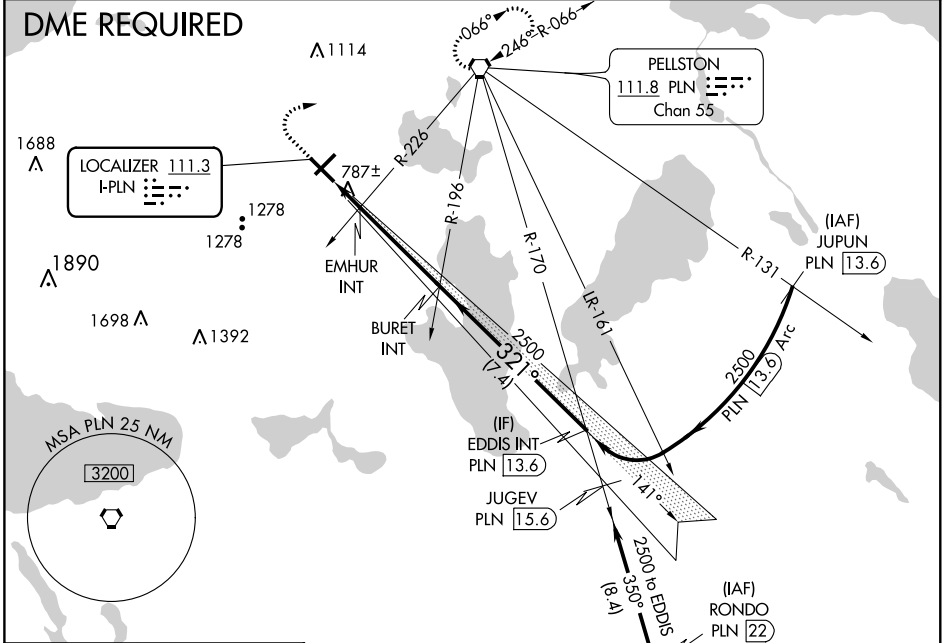
**ILS or LOC RWY 32**  
PELLSTON RGNL AIRPORT OF EMMET COUNTY (PLN)

When local altimeter setting not received, use Harbor Springs altimeter setting and increase DA to 940, and all MDA 40 feet; increase S-LOC 32 Cat D, Circling Cat C and EMHUR fix minimums S-LOC 32 Cat C, Circling Cat C visibility 1/4 mile. Circling Rwy 5 NA at night.

MALSR

MISSED APPROACH: Climb to 1400 then climbing right turn to 2600 direct PLN VORTAC and hold.

ASOS <b>119.025</b>	MINNEAPOLIS CENTER <b>134.6 354.05</b>	UNICOM <b>123.0 (CTAF) 0</b>
------------------------	---	---------------------------------

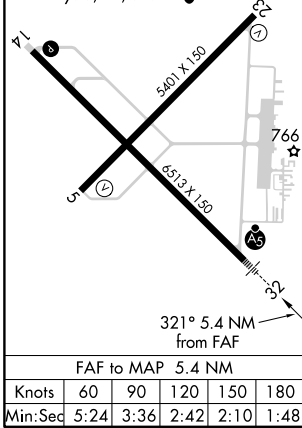


EC-1, 25 FEB 2021 to 25 MAR 2021

EC-1, 25 FEB 2021 to 25 MAR 2021

ELEV 721	<b>D</b>	TDZE 712
----------	----------	----------

HIRL Rwy 14-32  
MIRL Rwy 5-23  
REIL Rws 5, 14, and 23



1400	2600	PLN	BURET INT 2500	EDDIS INT Procedure Turn NA
↑	↪		2500	2500
*LOC only.				
EMHUR INT		*1220		
↑		↪		
1.5 NM		3.9 NM		7.4 NM

GS 3.00° TCH 54

CATEGORY	A	B	C	D
S-ILS 32	912-1/2 200 (200-1/2)			
S-LOC 32	1220-1/2	508 (500-1/2)	1220-1	508 (500-1)
CIRCLING	1260-1 539 (600-1)	1300-1 579 (600-1)	1300-1 1/2 579 (600-1 1/2)	1420-2 1/4 699 (700-2 1/4)
EMHUR FIX MINIMUMS (DUAL VOR RECEIVERS REQUIRED)				
S-LOC 32	1080-1/2 368 (400-1/2)			1080-3/4 368 (400-3/4)
CIRCLING	1260-1 539 (600-1)	1300-1 579 (600-1)	1300-1 1/2 579 (600-1 1/2)	1420-2 1/4 699 (700-2 1/4)