

WAAS CH <b>81915</b> W23A	APP CRS <b>231°</b>	Rwy Idg TDZE Apt Elev	<b>5395</b> <b>721</b> <b>721</b>
---------------------------------	------------------------	-----------------------------	---

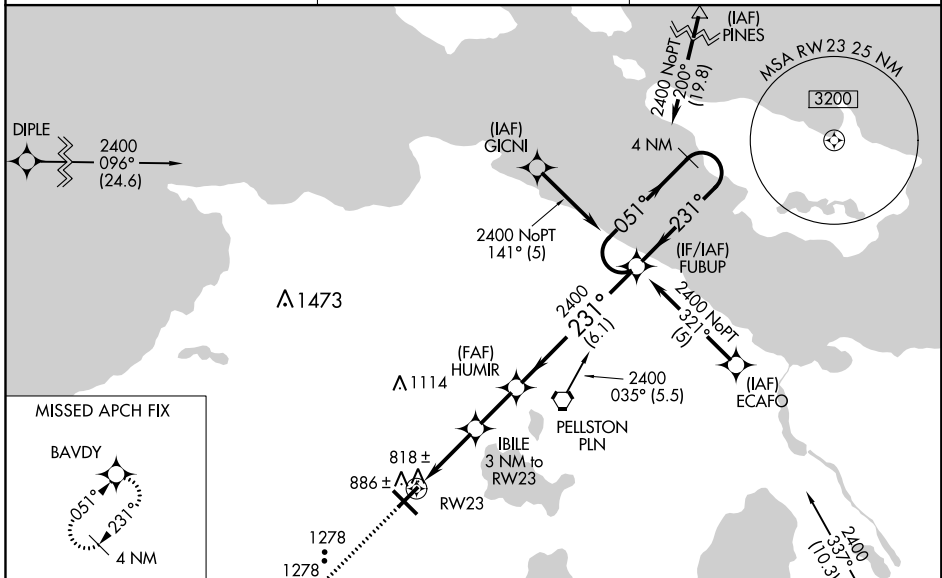
# RNAV (GPS) RWY 23

PELLSTON RGNL AIRPORT OF EMMET COUNTY (PLN)

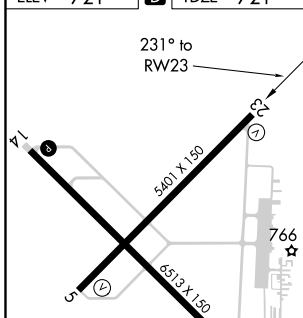
**⚠** Baro-VNAV NA when using Harbor Springs altimeter setting. For uncompensated Baro-VNAV systems, LNAV/VNAV NA below -16°C (4°F) or above 47°C (116°F). DME/DME RNP-0.3 NA. Rwy 23 helicopter visibility reduction below 3/4 SM NA. When local altimeter setting not received, use Harbor Springs altimeter setting and increase LPV DA to 1085, LNAV/VNAV DA to 1137 and all visibilities 1/4 mile, and all MDA 40 feet; increase Circling Cat C visibility 1/4 mile. Circling Rwy 5 NA at night.

**MISSED APPROACH:**  
Climb to 3000 direct  
BAVDY and hold.

ASOS <b>119.025</b>	MINNEAPOLIS CENTER <b>134.6 354.05</b>	UNICOM <b>123.0 (CTAF) 0</b>
------------------------	---	---------------------------------



ELEV 721	<b>D</b> TDZE 721
----------	-------------------



	3000 BAVDY		4 NM Holding Pattern	
	*LNAV only.		GP 3.00° TCH 45	
	RW23		HUMIR FUBUP	
	IBILE 3 NM to RW23		231° 051° 2400	
	*1720		2400	
	3 NM		2.1 NM 6.1 NM	
CATEGORY	A	B	C	D
LPV DA		1057-1¼	336 (400-1¼)	
LNAV/VNAV DA		1109-1¼	338 (400-1¼)	
LNAV MDA	1240-1	519 (600-1)	1240-1½ 519 (600-1½)	1240-1¾ 519 (600-1¾)
CIRCLING	1260-1 539 (600-1)	1300-1 579 (600-1)	1300-1½ 579 (600-1½)	1420-2¼ 699 (700-2¼)

HIRL Rwy 14-32 **0**  
MIRL Rwy 5-23 **0**  
REIL Rwy 5, 14, and 23 **0**

EC-1, 25 FEB 2021 to 25 MAR 2021

EC-1, 25 FEB 2021 to 25 MAR 2021