


WAAS CH 77813 W32A	APP CRS 321°	Rwy Idg 6513 TDZE 712 Apt Elev 721
--	------------------------	---

RNAV (GPS) RWY 32

PELLSTON RGNL AIRPORT OF EMMET COUNTY (PLN)

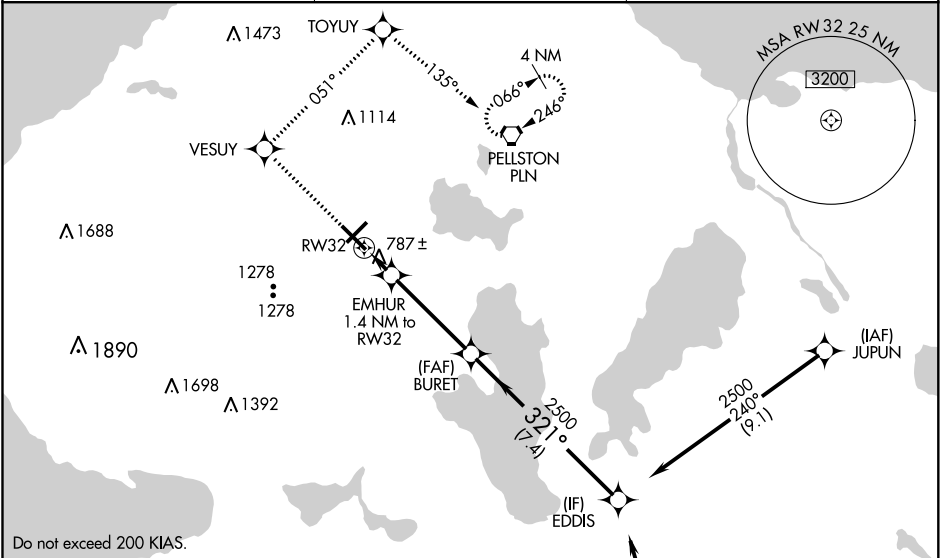
⚠ Baro-VNAV NA when using Harbor Springs altimeter setting. For uncompensated Baro-VNAV systems, LNAV/VNAV NA below -16°C (4°F) or above 47°C (116°F). DME/DME RNP-0.3 NA. When local altimeter setting not received, use Harbor Springs altimeter setting and increase LPV DA to 940, LNAV/VNAV DA to 1084, and all MDA 40 feet; increase Circling Cat C visibility ¼ mile. Night Landing: Rwy 5 NA.

MALS R



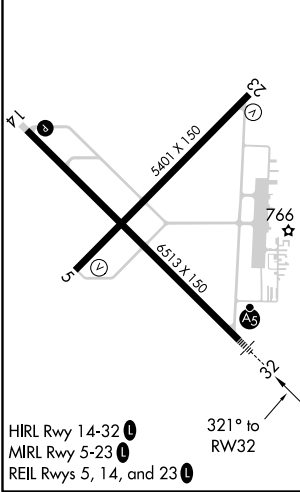
MISSED APPROACH: Climb to 2600 direct VESUY and via track 051° to TOYUY and via track 135° to PLN VORTAC and hold.

ASOS 119.025	MINNEAPOLIS CENTER 134.6 354.05	UNICOM 123.0 (CTAF) 0
------------------------	---	---------------------------------



ELEV 721 **D** TDZE 712

Procedure NA for arrivals at RONDO via V609 southbound.



2600	VESUY	tr 051°	TOYUY	tr 135°	PLN	Procedure Turn NA
* LNAV only.						BURET 2500
EMHUR 1.4 NM to RW32						EDDIS 2500
RW32						GP 3.00° TCH 54
* 1220						
1.4 NM		3.9 NM		7.4 NM		

CATEGORY	A	B	C	D
LPV DA		912-½	200 (200-½)	
LNAV/VNAV DA		1056-⅝	344 (400-⅝)	
LNAV MDA	1080-½	368 (400-½)	1080-⅝	368 (400-⅝)
CIRCLING	1260-1 539 (600-1)	1300-1 579 (600-1)	1300-1½ 579 (600-1½)	1420-2 ¼ 699 (700-2¼)

EC-1, 25 FEB 2021 to 25 MAR 2021

EC-1, 25 FEB 2021 to 25 MAR 2021