

WAAS CH 57938 W35A	APP CRS 346°	Rwy Idg TDZE 538 Apt Elev 538	3651 538 538
--	------------------------	---	---

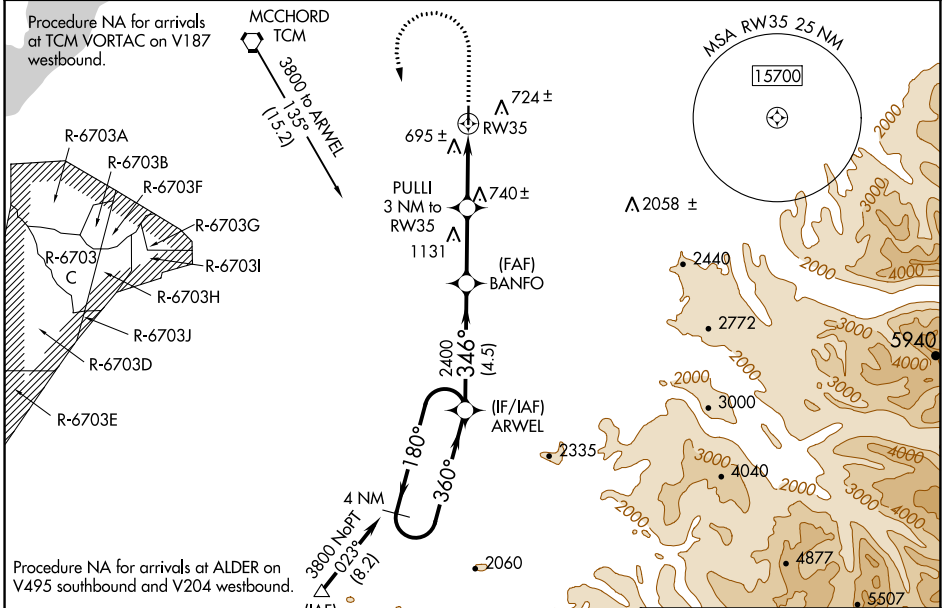
RNAV (GPS) RWY 35

PIERCE COUNTY-THUN FIELD (PLU)

▼ For uncompensated Baro-VNAV systems, LNAV/VNAV NA below -1.6°C (4°F) or above 54°C (130°F). DME/DME RNP-0.3 NA. Helicopter visibility reduction below ¾ SM NA. Baro-VNAV and VDP NA with McChord Field altimeter setting. When local altimeter not received, use McChord Field altimeter setting and increase all DA 49 feet and increase LPV and LNAV/VNAV visibilities ¼ mile; increase all MDA 60 feet.

MISSED APPROACH: Climb to 1900 then climbing left turn to 3800 direct ARWEL and hold.

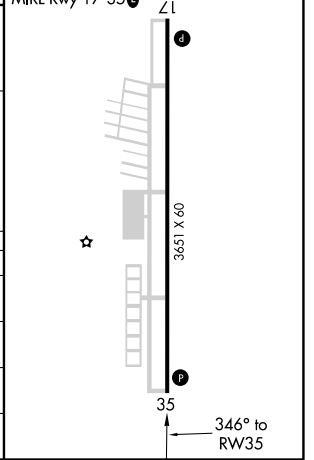
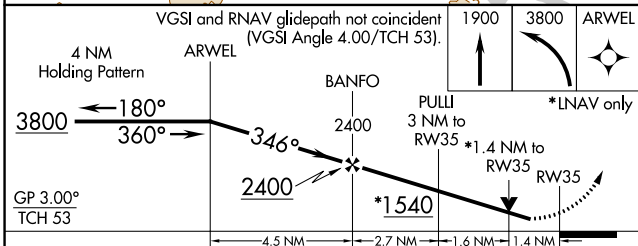
AWOS-3 128.575	SEATTLE APP CON 126.5 377.15	CLNC DEL 121.85	UNICOM 122.7 (CTAF) 0
--------------------------	--	---------------------------	---------------------------------



NW-1, 25 FEB 2021 to 25 MAR 2021

NW-1, 25 FEB 2021 to 25 MAR 2021

ELEV 538	TDZE 538
REIL Rws 17 and 35 0	MIRL Rwy 17-35 0



CATEGORY	A	B	C	D
LPV DA	877-1 1/8	339 (400-1 1/8)		NA
LNAV/VNAV DA	990-1 1/2	452 (500-1 1/2)		NA
LNAV MDA	1000-1	462 (500-1)		NA
CIRCLING	1080-1	542 (600-1)		NA