

APP CRS	Rwy Idg	3798
338°	TDZE	795
	Apt Elev	795

RNAV (GPS) RWY 33

PEMBINA MUNI (PMB)

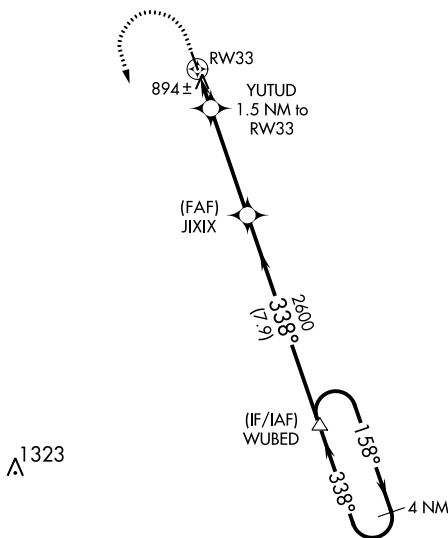
RNP APCH.

NA Procedure NA at night. Obtain local altimeter setting on CTAF; when not received use Hallock altimeter setting; increase all MDA 60 feet and LNAV Cat C visibility ¼ SM. Rwy 33 helicopter visibility reduction below 1 SM NA.

MISSED APPROACH:
Climb to 1200 then climbing left turn 2600 direct NALCO and hold.

MINNEAPOLIS CENTER
132.15 269.6

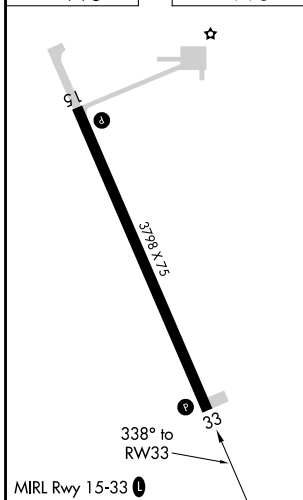
UNICOM
122.8 (CTAF) 0



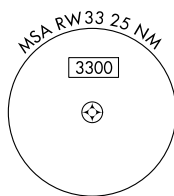
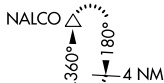
NC-1, 25 FEB 2021 to 25 MAR 2021

NC-1, 25 FEB 2021 to 25 MAR 2021

ELEV 795	TDZE 795
----------	----------



PEMBINA, NORTH DAKOTA
Orig-B 08OCT20



1200	2600	NALCO	VGSI and RNAV glidepath not coincident (VGSI Angle 3.00/TCH 26).	
↑	↶	△	JIXIX	WUBED 4 NM Holding Pattern
YUTUD 1.5 NM to RW33		↖ 3.00° TCH 40	← 338°	→ 158°
RW33		1300	← 2600	← 338°
1.5 NM		4.1 NM	7.9 NM	2600
CATEGORY	A	B	C	D
LNAV MDA	1160-1 365 (400-1)			NA
C CIRCLING	1200-1 405 (500-1)	1300-1 505 (600-1)	1300-1½ 505 (600-1½)	NA

48°57'N-97°14'W

PEMBINA MUNI (PMB) RNAV (GPS) RWY 33