

HI-TACAN RWY 25

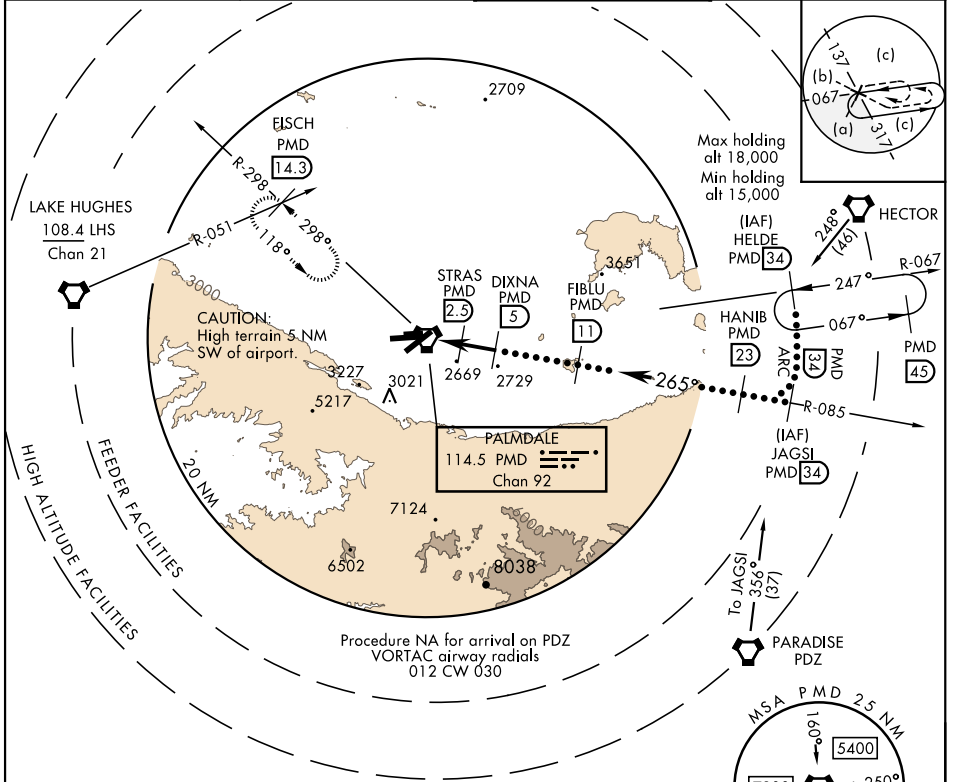
TACAN PMD Chan 92	APCH CRS 265°	Rwy Idg 12,002 TDZE 2503 Arpt Elev 2543
-----------------------------	-------------------------	--

JAL-310 [USAF]

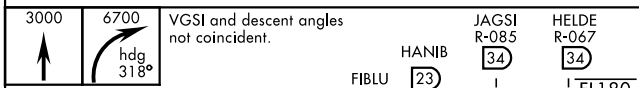
PALMDALE USAF PLANT 42 (KPMD)

▽ * Circling NA S of Rwy 4 and 25.
▲ MISSED APPROACH: Climb to 3000 then climbing right turn to 6700 on heading 318° on PMD VORTAC R-298 to FISCH INT/PMD 14.3 DME/RADAR and hold, continue climb-in-hold to 6700.

ATIS 118.275	JOSHUA APP CON 124.55 363.0	PALMDALE TOWER * 123.7 (CTAF) 0 317.6	GND CON 121.9 348.6
------------------------	---------------------------------------	---	-------------------------------



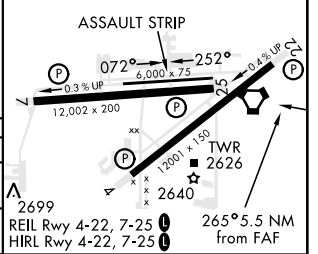
EMERG SAFE ALT 100 NM 14,400



3000	6700	VGSI and descent angles not coincident.	HANIB	JAGSI R-085	HELDE R-067
↑	hdg 318°		FIBLU 11	34	34
3.00° TCH 58	0.3	3500	4500	6000	12,000
0.8 NM	2.2 NM	2.5 NM			FL180 15,000

CATEGORY	C		D		E
S-25	2840-1		337	(400-1)	
CIRCLING *	3140-1½ 597 (600-1½)		3740-3 1197 (1200-3)		3760-3 1217 (1300-3)

ELEV 2543	TDZE 2503
-----------	-----------



HI-TACAN RWY 25

SW-3, 25 FEB 2021 to 25 MAR 2021

SW-3, 25 FEB 2021 to 25 MAR 2021