

WAAS CH 86520 W25A	APP CRS 254°	Rwy Idg TDZE Apt Elev	12002 2503 2543
--	------------------------	-----------------------------	--

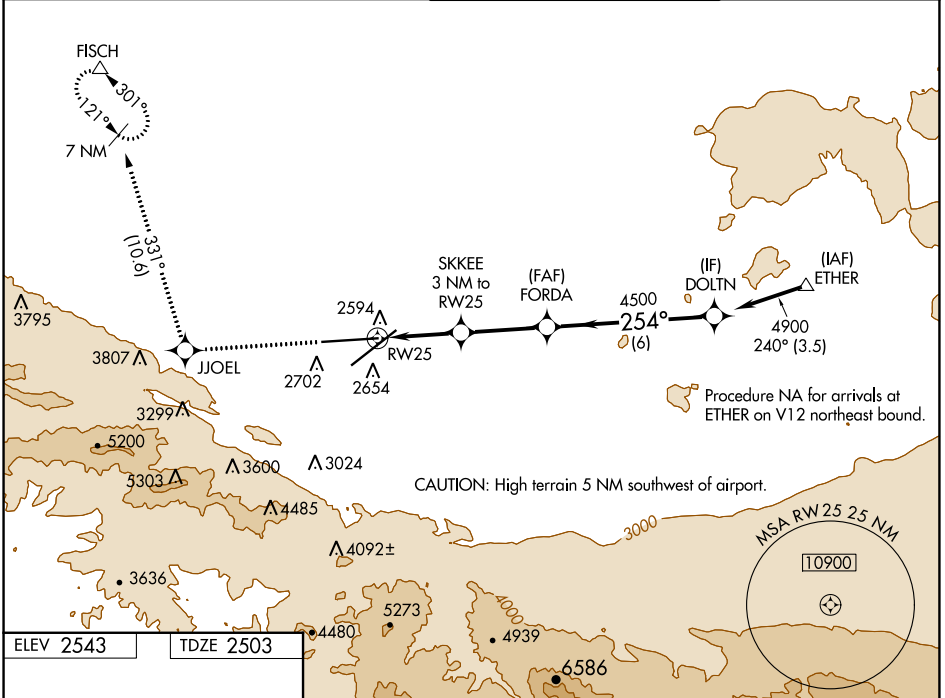
RNAV (GPS) RWY 25

PALMDALE USAF PLANT 42 (PMD)

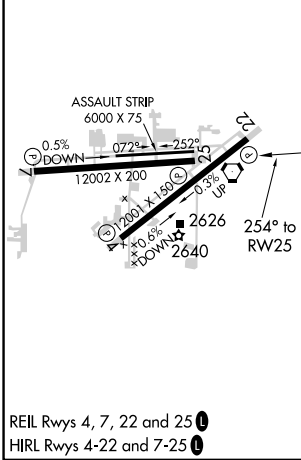
⚠ For uncompensated Baro-VNAV systems, LNAV/VNAV NA below -6°C (22°F) or above 50°C (123°F). Circling NA for Cats C and D south of Rwy 4 and 25.
DME/DME RNP-0.3 NA.

MISSED APPROACH: Climb 6700 direct JJOEL and on track 331° direct FISCH and hold, continue climb-in-hold to 6700.

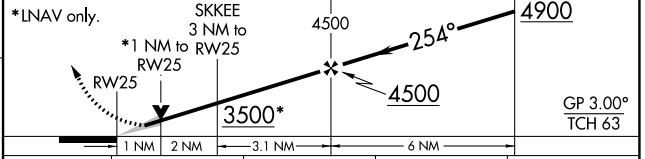
ATIS 118.275	JOSHUA APP CON 124.55 363.0	PALMDALE TOWER * 123.7 (CTAF) 317.6	GND CON 121.9 317.6
------------------------	---------------------------------------	---	-------------------------------



ELEV 2543	TDZE 2503
-----------	-----------



6700	JJOEL	↑	tr 331°	FISCH	△	VGSI and RNAV glidepath not coincident (VGSI Angle 3.00/TCH 76).
------	-------	---	---------	-------	---	--



CATEGORY	A	B	C	D
LPV DA		2703-3/4	200 (200-3/4)	
LNAV/VNAV DA		2806-1	303 (300-1)	
LNAV MDA		2880-1	377 (400-1)	
CIRCLING	3020-1 477 (500-1)	3060-1 517 (600-1)	3140-1 1/2 597 (600-1 1/2)	3740-3 1197 (1200-3)

SW-3, 25 FEB 2021 to 25 MAR 2021

SW-3, 25 FEB 2021 to 25 MAR 2021