

WAAS CH 40426 W29A	APP CRS 291°	Rwy ldg TDZE Apt Elev	8900 7078 7096
--	------------------------	-----------------------------	---

RNAV (GPS) RWY 29

RALPH WENZ FIELD (PNA)

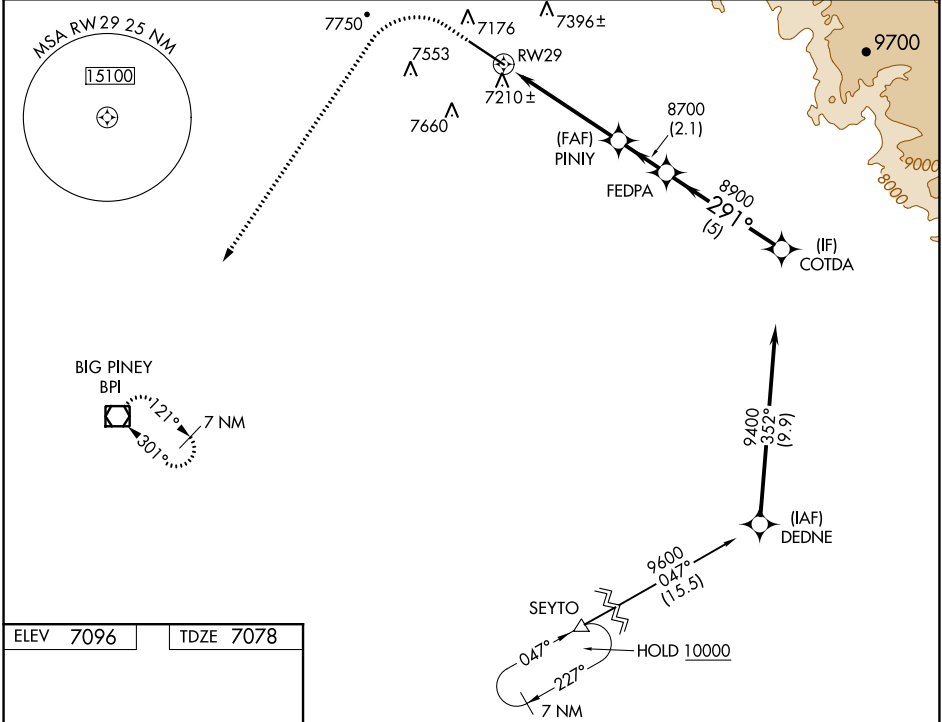
Baro-VNAV NA. When local altimeter setting not received, use Big Piney altimeter setting and increase all DA 58 feet and all MDA 60 feet; increase LPV all Cats, LNAV and Circling Cat C/D visibility ¼ mile, and LNAV/VNAV all Cats visibility ⅛ mile. Circling NA south of Rwy 11/29. DME/DME RNP-0,3 NA. Helicopter visibility reduction below ¾ SM NA. VDP NA with Big Piney altimeter setting.

ODALS

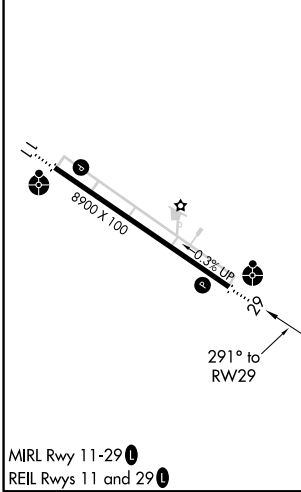


MISSED APPROACH: Climb to 7600 then climbing left turn to 10000 direct BPI VOR/DME and hold.

AWOS-3 118.325	SALT LAKE CENTER 128.35 239.25	UNICOM 122.8 (CTAF)
--------------------------	--	-------------------------------



ELEV 7096	TDZE 7078
-----------	-----------



7600	10000	BPI	VGSI and RNAV glidepath not coincident (VGSI Angle 2.83/TCH 40).	COTDA
↑	↶	☐		
*LNAV only.		*1.5 NM to RWY29	PINIY	FEDPA
RWY29		8700	8700	9400
1.5 NM		3.5 NM	2.1 NM	5 NM
A		B	C	D
CATEGORY	LPV DA	7328-3¼ 250 (300-¾)		
CATEGORY	LNAV/VNAV DA	7606-1¾ 528 (600-1¾)		
CATEGORY	LNAV MDA	7600-1 522 (600-1)	7600-1½ 522 (600-1½)	
CATEGORY	CIRCLING	7600-1 504 (600-1)	7640-1½ 544 (600-1½)	7720-2 624 (700-2)

NW-1, 25 FEB 2021 to 25 MAR 2021

NW-1, 25 FEB 2021 to 25 MAR 2021