


WAAS CH <b>50408</b> <b>W17A</b>	APP CRS <b>175°</b>	Rwy Idg TDZE Apt Elev	<b>7201</b> <b>1004</b> <b>1008</b>
--	------------------------	-----------------------------	---

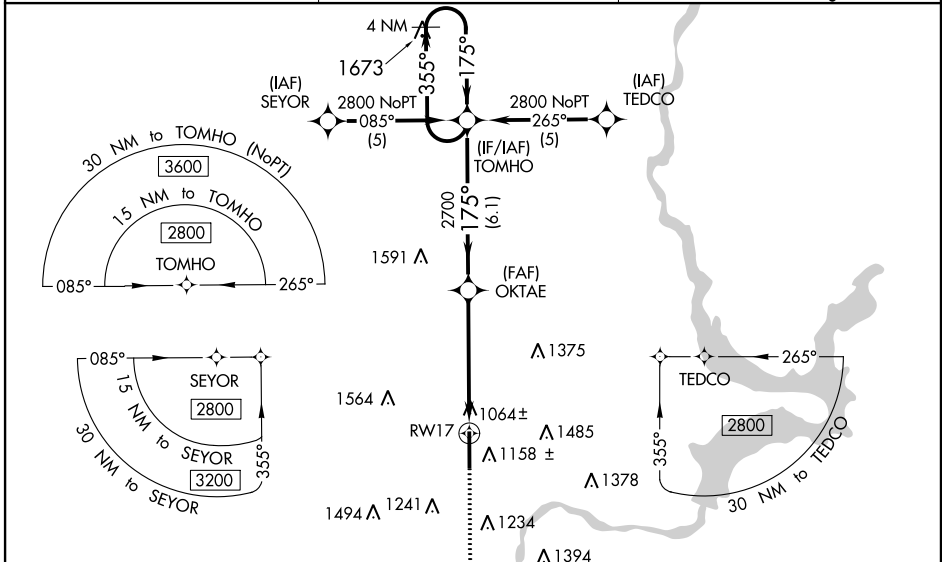
# RNAV (GPS) RWY 17

PONCA CITY RGNL (PNC)

**▼** For inop MALSR, increase LPV visibility to 1 mile. For uncompensated Baro-VNAV systems, LNAV/VNAV NA below -17°C (2°F) or above 47°C (116°F). DME/DME RNP-0.3 NA.  
**▲** When local altimeter setting not received use Winfield-Arkansas City altimeter setting and increase all DA 82 feet and MDA 100 feet; increase LPV all Cats, LNAV/VNAV all Cats LNAV Cat C and Cat D and Circling Cat C visibility ¼ mile. VDP NA when using Winfield-Arkansas City altimeter setting. For inop MALSR when using Winfield-Arkansas City altimeter setting, increase LPV and LNAV/VNAV visibility ¼ mile all Cats, increase LNAV Cats C and D visibility ¼ mile. Baro-VNAV NA when using Winfield-Arkansas City altimeter setting.


**MALSR**  
 MISSED APPROACH:  
 Climb to 2700 direct  
 ZULOT and hold.

ASOS <b>134.075</b>	KANSAS CITY CENTER <b>127.8 319.1</b>	UNICOM <b>123.0 (CTAF) 0</b>
------------------------	--	---------------------------------

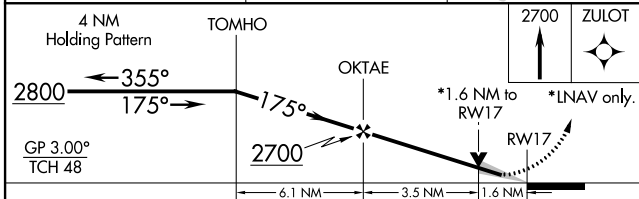
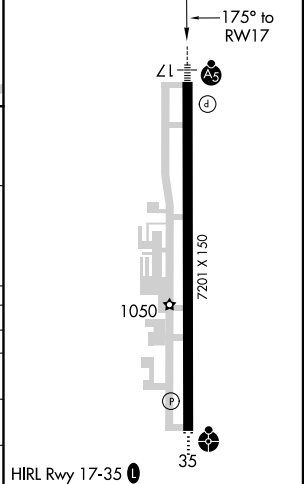


SC-1, 25 FEB 2021 to 25 MAR 2021

SC-1, 25 FEB 2021 to 25 MAR 2021

**MISSED APCH FIX**  
  
 ZULOT  
 355°  
 4 NM

ELEV 1008	TDZE 1004
-----------	-----------



CATEGORY	A	B	C	D
LPV DA		1279-1/2	275 (300-1/2)	
LNAV/VNAV DA		1330-3/4	326 (400-3/4)	
LNAV MDA	1540-1/2	536 (600-1/2)	1540-1 536 (600-1)	1540-1 1/4 536 (600-1 1/4)
CIRCLING	1540-1	532 (600-1)	1560-1 1/2 552 (600-1 1/2)	1560-2 552 (600-2)