


WAAS CH <b>93808</b> <b>W35A</b>	APP CRS <b>355°</b>	Rwy Idg <b>7201</b> TDZE <b>1008</b> Apt Elev <b>1008</b>
--	------------------------	---


# RNAV (GPS) RWY 35

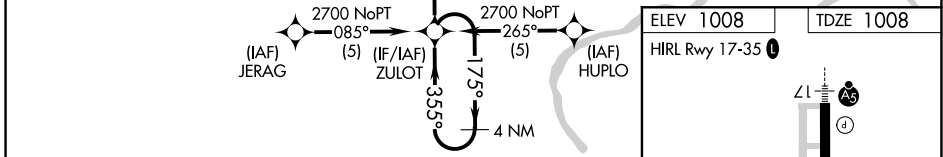
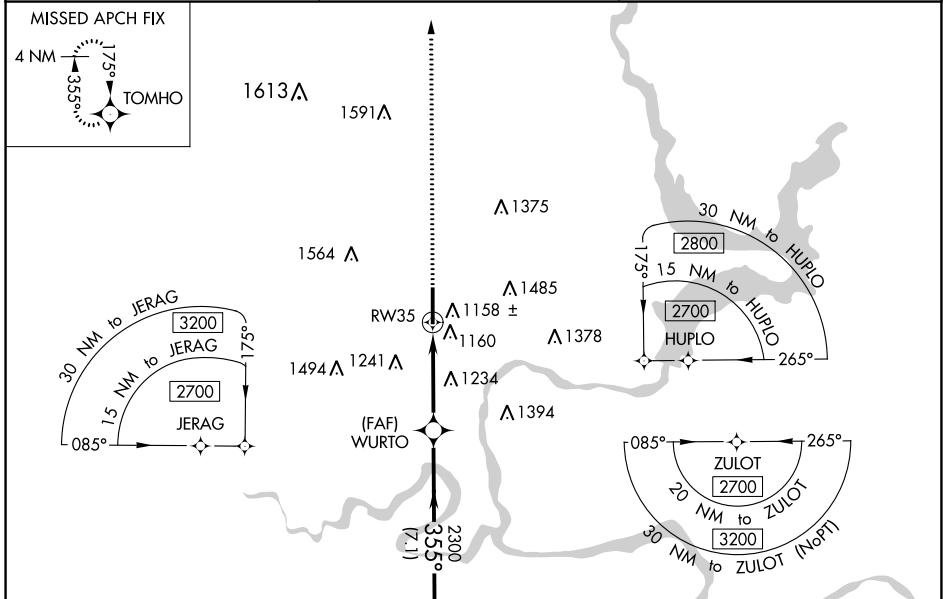
PONCA CITY RGNL (PNC)



**▽** For uncompensated Baro-VNAV systems, LNAV/VNAV NA below -17°C (2°F) or above 46°C (114°F). DME/DME RNP-0.3 NA. When local altimeter setting not received use Winfield-Arkansas City altimeter setting and increase all DA 82 feet and MDA 100 feet; increase Cat C Circling visibility ¼ mile, increase LNAV Cat C, D visibility ¼ mile, LPV and LNAV/VNAV all Cats visibility ¼ mile. Baro-VNAV NA when using Winfield-Arkansas City altimeter setting. Visibility reduction by helicopters NA.

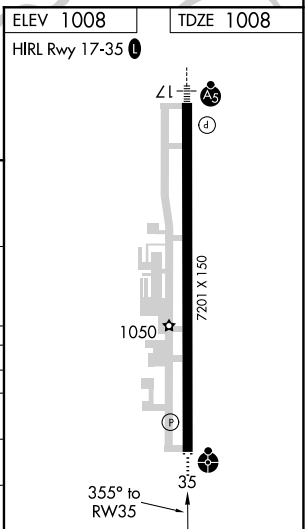
**ODALS** 

**MISSED APPROACH:** Climb to 2800 direct TOMHO and hold.

ASOS <b>134.075</b>	KANSAS CITY CENTER <b>127.8 319.1</b>	UNICOM <b>123.0 (CTAF)</b> 
------------------------	--	---



4 NM Holding Pattern	ZULOT	WURTO	2800	TOMHO
2700	← 175°	→ 355°	↑	
GP 3.00°		355°		
TCH 45		2300		
		7.1 NM	3.9 NM	
CATEGORY	A	B	C	D
LPV DA		1295-1	287 (300-1)	
LNAV/VNAV DA		1478-1¾	470 (500-1¾)	
LNAV MDA	1540-1	532 (600-1)	1540-1½ 532 (600-1½)	1540-1¾ 532 (600-1¾)
CIRCLING	1540-1	532 (600-1)	1560-1½ 552 (600-1½)	1560-2 552 (600-2)



SC-1, 25 FEB 2021 to 25 MAR 2021

SC-1, 25 FEB 2021 to 25 MAR 2021