

WAAS CH 69327 W33A	APP CRS 333°	Rwy Idg TDZE Apt Elev	5000 108 120
--	------------------------	-----------------------------	---

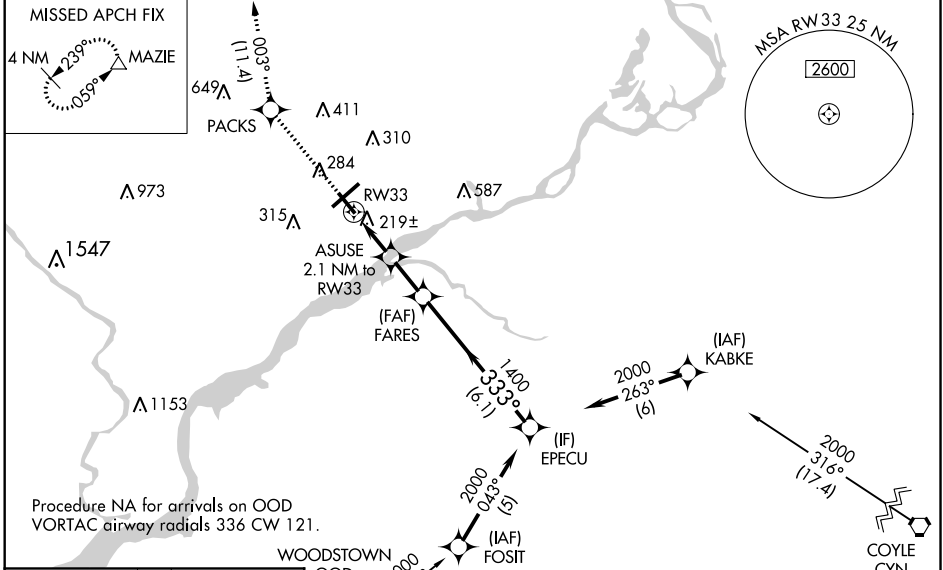
RNAV (GPS) RWY 33

NORTHEAST PHILADELPHIA (PNE)

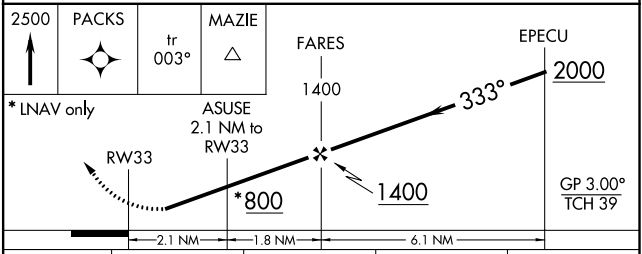
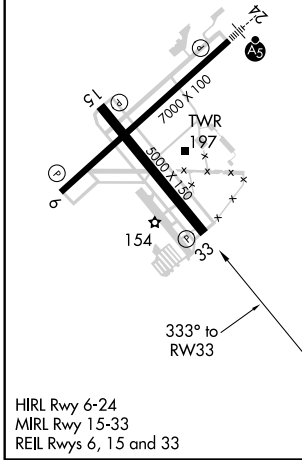
⚠ Baro-VNAV NA when using Philadelphia Intl altimeter setting. For uncompensated Baro-VNAV systems, LNAV/VNAV NA below -1.5°C (5°F) or above 43°C (109°F). When local altimeter setting not received, use Philadelphia Intl altimeter setting and increase all DA 50 feet and all MDA 60 feet. Increase LPV and LNAV/VNAV visibility all Cats ½ mile and LNAV Cats C/D visibility ¼ mile. DME/DME RNP-0.3 NA.

⚠ MISSED APPROACH: Climb to 2500 direct PACKS and on track 003° to MAZIE and hold.

ATIS 121.15	PHILADELPHIA APP CON 123.8 291.7	NORTHEAST PHILADELPHIA TOWER * 126.9 (CTAF) 0 278.8	GND CON 121.7	CLNC DEL 127.25	UNICOM 122.95
-----------------------	--	---	-------------------------	---------------------------	-------------------------



ELEV 120	TDZE 108
----------	----------



CATEGORY	A	B	C	D
LPV DA	380-1 272 (300-1)			
LNAV/VNAV DA	400-1 292 (300-1)			
LNAV MDA	480-1 372 (400-1)			
CIRCLING	640-1	520 (600-1)	640-1½ 520 (600-1½)	680-2 560 (600-2)

NE-4, 25 FEB 2021 to 25 MAR 2021

NE-4, 25 FEB 2021 to 25 MAR 2021