

VOR RWY 16

POLK AAF (KPOE)

VOR FXU 108.4	APCH CRS 158°	Rwy Idg THRE Arprt Elev 3913 328 330
-------------------------	-------------------------	--

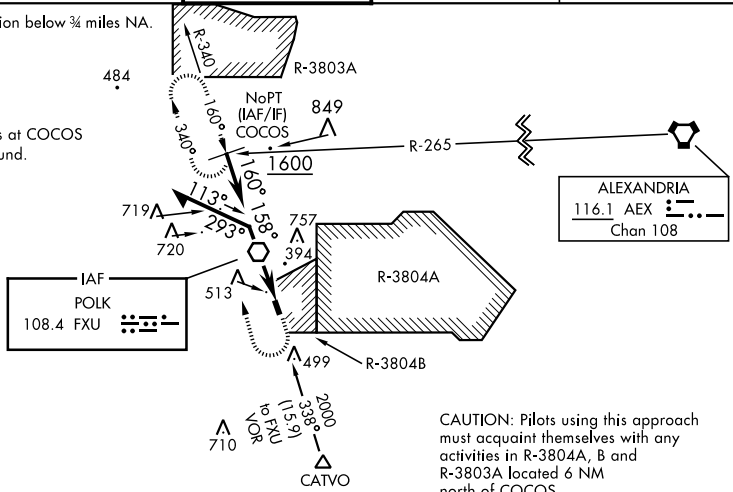
AL-5096 [USA]

MISSED APPROACH: Climbing right turn to 2000 on FXU
VOR R-340 to COCOS int and hold.

ATIS 134.85 282.2	POLK APP CON 123.7 261.3	POLK TOWER 119.0 257.75	GND CON 121.8 239.25	ASR/PAR
-----------------------------	------------------------------------	-----------------------------------	--------------------------------	---------

Helicopter visibility reduction below 3/4 miles NA.

Procedure NA for arrivals at COCOS on V212 westbound.



CAUTION: Pilots using this approach must acquaint themselves with any activities in R-3804A, B and R-3803A located 6 NM north of COCOS.

RADAR required for arrivals at DXB NDB and CATVO.

SC-4, 25 FEB 2021 to 25 MAR 2021

SC-4, 25 FEB 2021 to 25 MAR 2021

ELEV 330	THRE 328
----------	----------

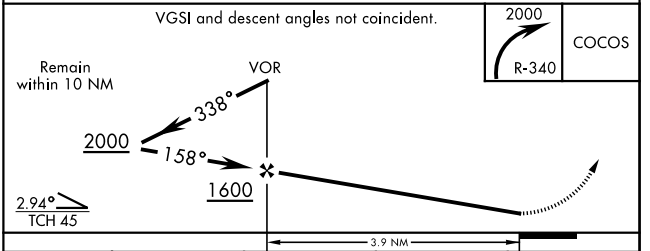
158° 3.9 NM from FAF

Rwy 16 Ildg 3913'

CAUTION: Rwy 34 apch end elev is 278.

HIRL Rwy 16-34
REIL Rwy 16-34

FAF to MAP 3.9 NM					
Knots	60	90	120	150	180
Min:Sec	3:54	2:36	1:57	1:34	1:18



CATEGORY	A	B	C	D
S-16	780-1 452 (500-1)	780-1 3/8 452 (500-1 3/8)	820-1 1/2 490 (500-1 1/2)	880-2 550 (600-2)
CIRCLING	820-1 490 (500-1)			

VOR RWY 16