

WAAS CH <b>97499</b> <b>W18A</b>	APP CRS <b>181°</b>	Rwy Idg TDZE Apt Elev	<b>5008</b> <b>331</b> <b>331</b>
--	------------------------	-----------------------------	---

# RNAV (GPS) RWY 18

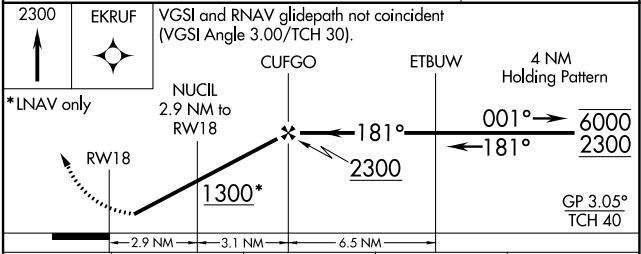
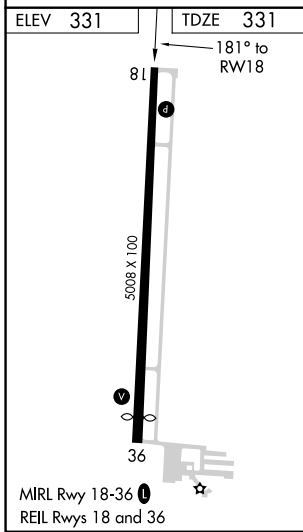
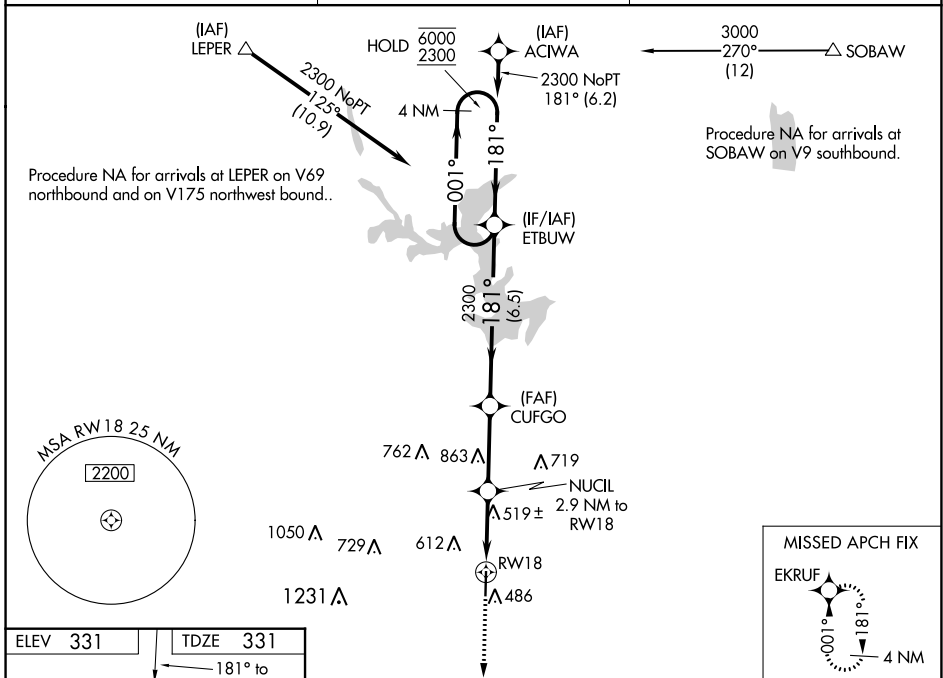
POPLAR BLUFF RGNL BUSINESS (POB)

RNP APCH.

▼ Rwy 18 helicopter visibility reduction below 3/4 SM NA. For uncompensated Baro-VNAV systems, LNAV/VNAV NA below -23°C or above 54°C.

MISSED APPROACH: Climb to 2300 direct EKRUF and hold.

ASOS <b>124.225</b>	MEMPHIS CENTER <b>120.075 289.4</b>	UNICOM <b>123.0 (CTAF) 0</b>
------------------------	--	---------------------------------



CATEGORY	A	B	C	D
LPV DA	634-1 303 (400-1)			
LNAV/VNAV DA	675-1 1/4 344 (400-1 1/4)			
LNAV MDA	800-1 469 (500-1)	800-1 3/8 469 (500-1 3/8)	800-1 1/2 469 (500-1 1/2)	800-1 1/2 469 (500-1 1/2)
CIRCLING	840-1 509 (600-1)	920-1 589 (600-1)	920-1 1/2 589 (600-1 1/2)	980-2 649 (700-2)

NC-3, 25 FEB 2021 to 25 MAR 2021

NC-3, 25 FEB 2021 to 25 MAR 2021