

VORTAC FOD 113.5 Chan 82	APP CRS 290°	Rwy Idg TDZE Apt Elev	4100 1222 1226
--	------------------------	-----------------------------	---

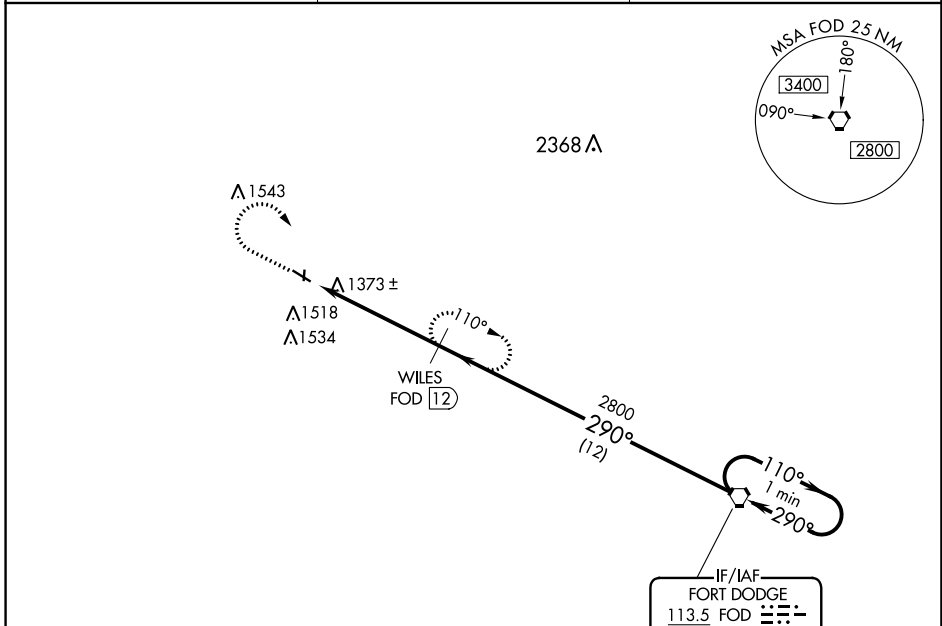
VOR/DME RWY 30

POCAHONTAS MUNI (POH)

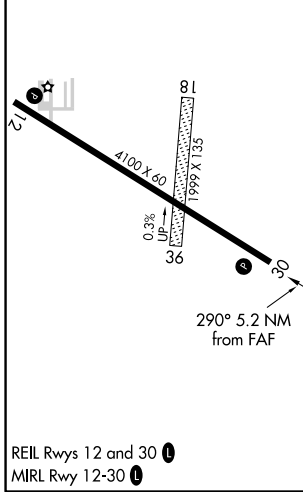
NA Helicopter visibility reduction below 3/4 SM NA. Use Algona altimeter setting; when not received, use Fort Dodge altimeter setting and increase all MDA 20 feet and S-30 Cat C visibility 1/8 mile. Night Landing: Rwy 12 NA. Circling NA to Rwys 18 and 36.

MISSED APPROACH: Climb to 2800 then right turn on FOD VORTAC R-290 to WILES/FOD 12 DME and hold.

AXA AWOS-3 118.475	MINNEAPOLIS CENTER 134.0 288.3	UNICOM 122.8 (CTAF)
------------------------------	--	-------------------------------

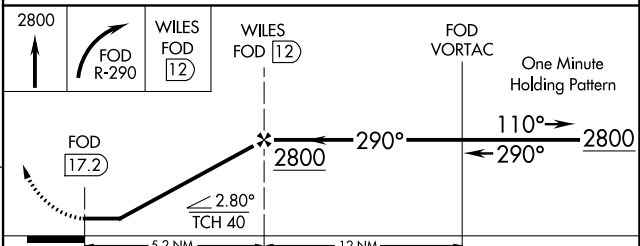


ELEV 1226	TDZE 1222
-----------	-----------



REIL Rwys 12 and 30 **1**
MIRL Rwy 12-30 **1**

NoPT for arrival on FOD VORTAC airway radials 003 CW 215.



CATEGORY	A	B	C	D
S-30	1900-1	678 (700-1)	1900-1 7/8 678 (700-1 7/8)	NA
CIRCLING	1900-1 674 (700-1)	1940-1 714 (800-1)	1940-2 714 (800-2)	NA

NC-3, 25 FEB 2021 to 25 MAR 2021

NC-3, 25 FEB 2021 to 25 MAR 2021