

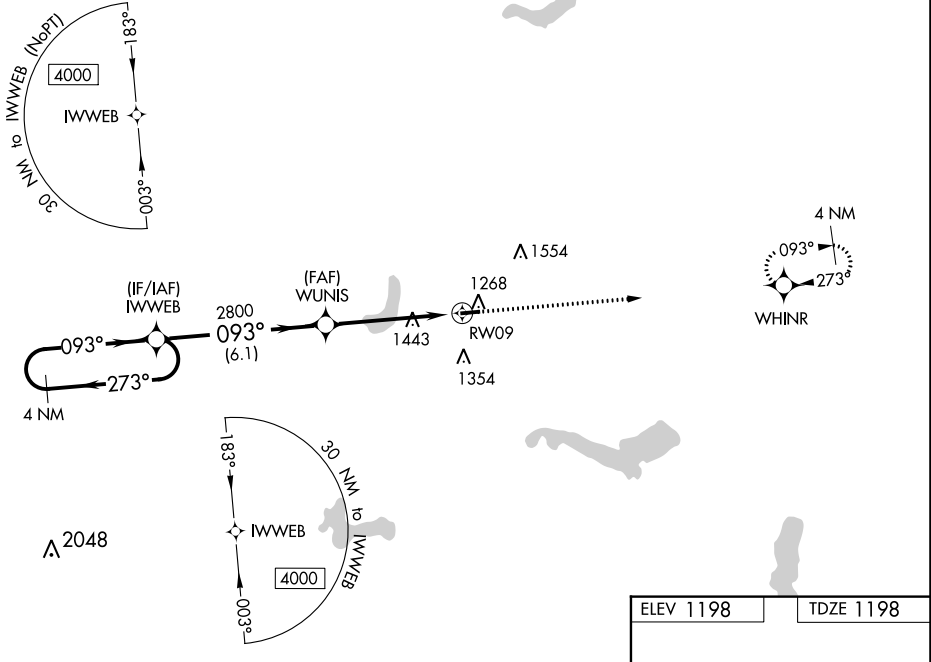
WAAS CH <b>77735</b> <b>W09A</b>	APP CRS <b>093°</b>	Rwy Idg TDZE Apt Elev	<b>3499</b> <b>1198</b> <b>1198</b>
--	------------------------	-----------------------------	---

**RNAV (GPS) RWY 9**  
PORTAGE COUNTY (POV)

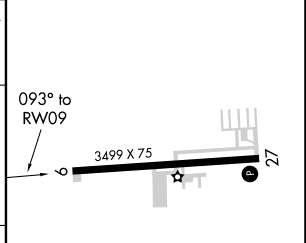
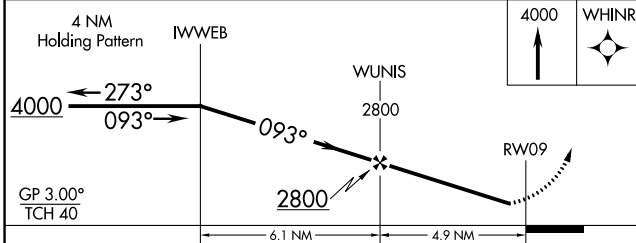
**▽** For uncompensated Baro-VNAV systems, LNAV/VNAV NA below -17°C (2°F) or above 54°C (130°F). DME/DME RNP-0.3 NA. When local altimeter setting not received, use Akron-Canton Rgnl altimeter setting and increase all DA 50 feet and all MDA 60 feet, increase LNAV Cat C visibility 1/8 mile, LNAV/VNAV all Cats and Circling Cat C visibility 1/4 mile. Baro-VNAV NA with Akron-Canton Rgnl altimeter setting. Helicopter visibility reduction below 1 SM NA. Night landing Cat C: Procedure NA.

MISSED APPROACH: Climb to 4000 direct WHINR and hold.

AWOS-3 <b>118.675</b>	CLEVELAND APP CON* <b>118.6 371.875</b>	CLNC DEL <b>125.65</b>	UNICOM <b>123.05</b> (CTAF) <b>📻</b>
--------------------------	--	---------------------------	---



ELEV 1198	TDZE 1198
-----------	-----------



CATEGORY	A	B	C	D
LPV DA	1448-1	250 (300-1)		NA
LNAV/VNAV DA	1507-1	309 (400-1)		NA
LNAV MDA	1760-1	562 (600-1)	1760-1 1/8 562 (600-1 1/8)	NA
<b>📻</b> CIRCLING	1760-1 562 (600-1)	1800-1 602 (700-1)	1920-2 722 (800-2)	NA

REIL Rwy 9 and 27 **📻**  
MIRL Rwy 9-27 **📻**

EC-2, 25 FEB 2021 to 25 MAR 2021

EC-2, 25 FEB 2021 to 25 MAR 2021