

WAAS CH 65731 W17A	APP CRS 174°	Rwy Idg TDZE Apt Elev	5862 3244 3245
----------------------------------------	------------------------	-----------------------------	-------------------------------------------

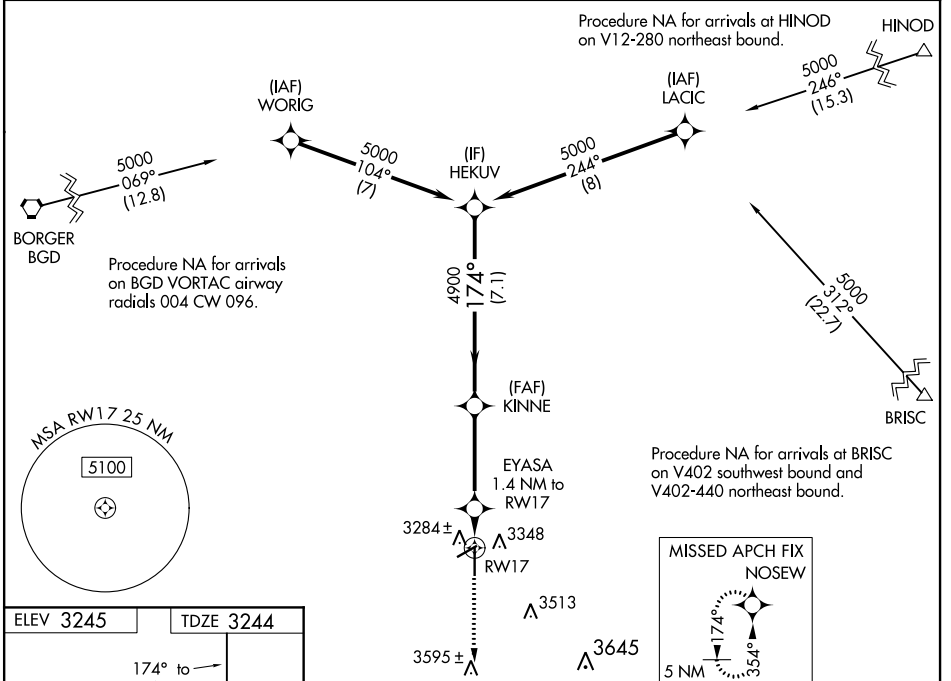
RNAV (GPS) RWY 17

PERRY LEFORS FIELD (PPA)

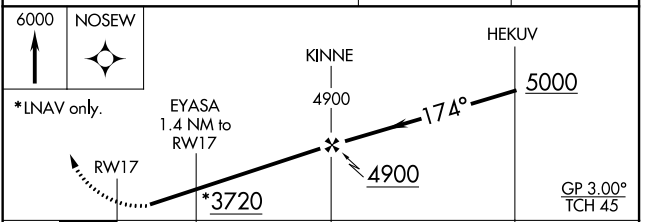
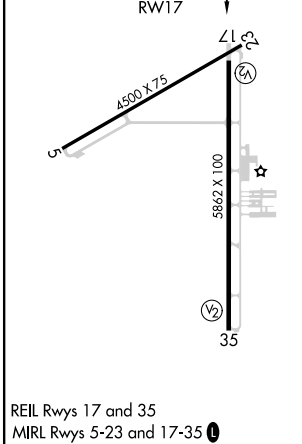
⚠ Baro-VNAV NA when using Borger altimeter setting. For uncompensated Baro-VNAV systems, LNAV/VNAV NA below -21°C (-5°F) or above 54°C (130°F). DME/DME RNP-0.3 NA. When local altimeter setting not received, use Borger altimeter setting and increase all DA 73 feet and all MDA 80 feet. Increase LPV and LNAV/VNAV all Cats and LNAV Cat C/D visibility 1/8 mile. Procedure NA at night. Helicopter visibility reduction below 1 SM NA.

MISSED APPROACH: Climb to 6000 direct NOSEW and hold, continue climb-in-hold to 6000.

AWOS-3 118.725	ALBUQUERQUE CENTER 127.85 285.475	UNICOM 122.7 (CTAF) 0
--------------------------	---------------------------------------------	----------------------------------------



ELEV 3245	TDZE 3244
-----------	-----------



CATEGORY	A	B	C	D
LPV DA		3494-1	250 (300-1)	
LNAV/VNAV DA		3494-1	250 (300-1)	
LNAV MDA		3540-1	296 (300-1)	
CIRCLING	3700-1	455 (500-1)	3700-1½ 455 (500-1½)	3800-2 555 (600-2)

SC-2, 25 FEB 2021 to 25 MAR 2021

SC-2, 25 FEB 2021 to 25 MAR 2021