

VORTAC BGD 108.6 Chan 23	APP CRS 110°	Rwy Idg TDZE Apt Elev N/A N/A 3245
---------------------------------------	------------------------	--

VOR/DME-A
PERRY LEFORS FIELD (PPA)

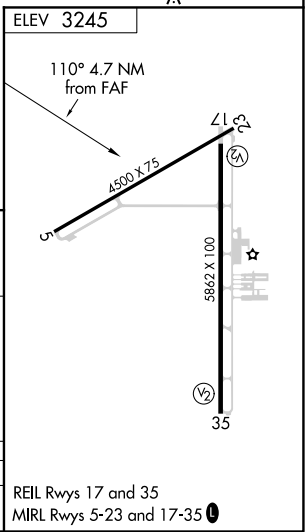
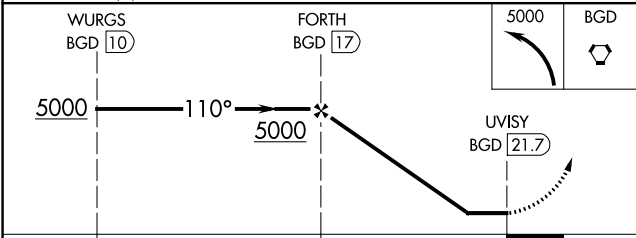
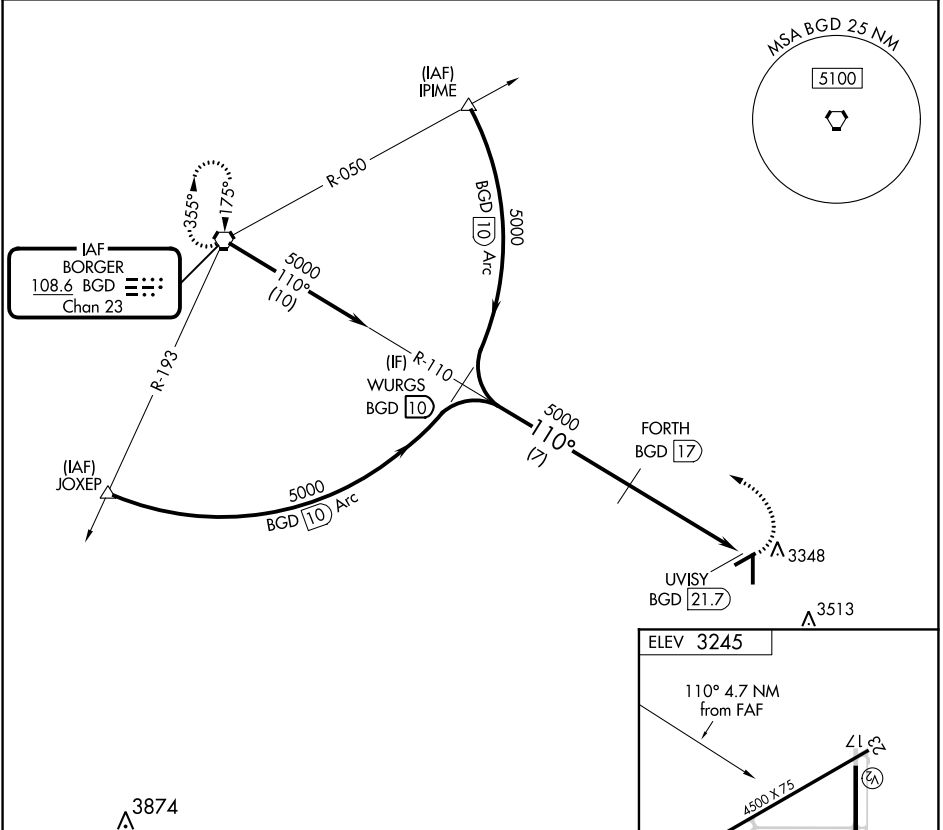
⚠ When local altimeter setting not received, use Berger altimeter setting and increase all MDA 80 feet. Procedure NA at night. Helicopter visibility reduction below 1 SM NA.

MISSED APPROACH: Climbing left turn to 5000 direct BGD VORTAC and hold.

AWOS-3
118.725

ALBUQUERQUE CENTER
127.85 285.475

UNICOM
122.7 (CTAF)



CATEGORY	A	B	C	D
CIRCLING	3700-1 455 (500-1)	3700-1¼ 455 (500-1¼)	3700-1½ 455 (500-1½)	3800-2 555 (600-2)

REIL Rwy 17 and 35
MIRL Rwy 5-23 and 17-35

SC-2, 25 FEB 2021 to 25 MAR 2021

SC-2, 25 FEB 2021 to 25 MAR 2021