

VOR/DME CNU <b>109.2</b> Chan <b>29</b>	APP CRS <b>161°</b>	Rwy Idg TDZE Apt Elev <b>5001</b> <b>901</b> <b>901</b>
---	------------------------	--

# VOR RWY 17

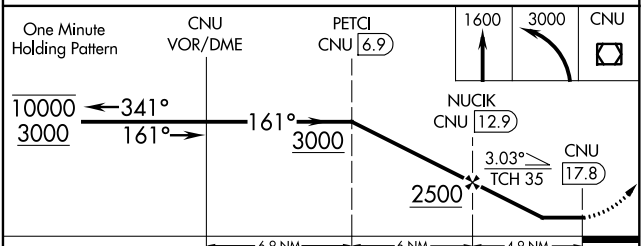
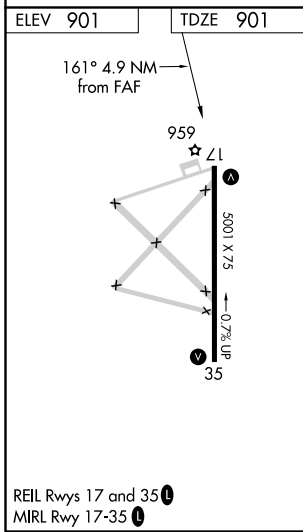
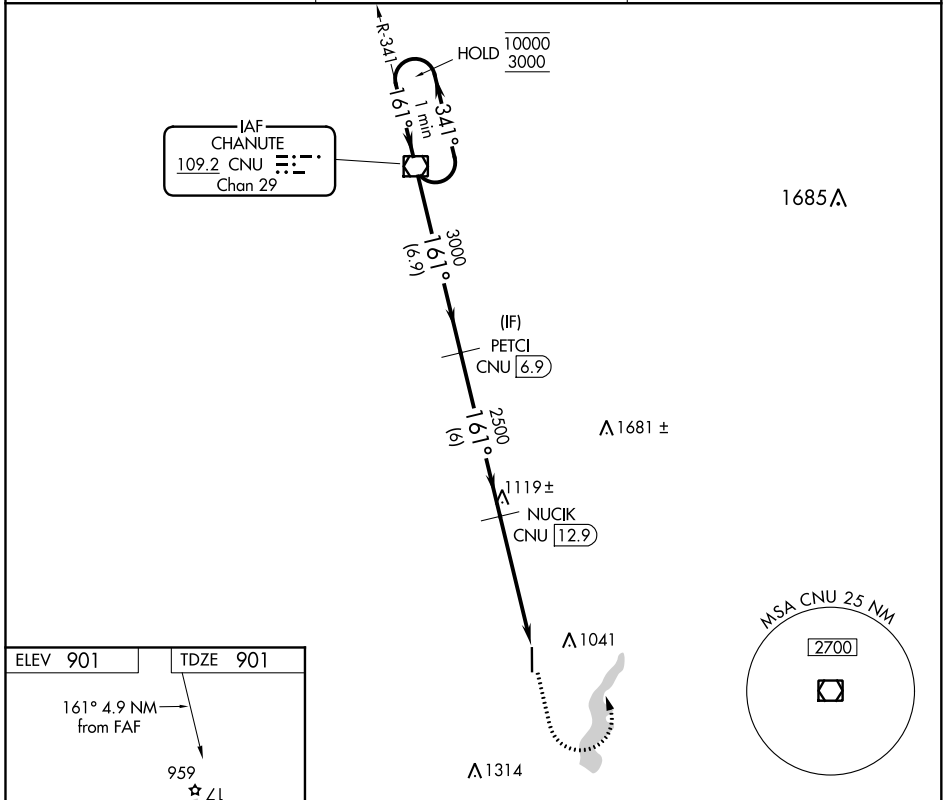
TRI-CITY (PPF)

DME required

- Procedure NA at night.
- Rwy 17 helicopter visibility reduction below 1 SM NA.

MISSED APPROACH: Climb to 1600 then climbing left turn to 3000 direct CNU VOR/DME and hold.

ASOS <b>118.175</b>	KANSAS CITY CENTER <b>132.9 279.5</b>	UNICOM <b>123.0 (CTAF)</b>
------------------------	--	-------------------------------



CATEGORY	A	B	C	D
S-17	1380-1	479 (500-1)	1380-1 $\frac{3}{8}$ 479 (500-1 $\frac{3}{8}$ )	NA
CIRCLING	1380-1	479 (500-1)	1380-1 $\frac{1}{2}$ 479 (500-1 $\frac{1}{2}$ )	NA

NC-2, 25 FEB 2021 to 25 MAR 2021

NC-2, 25 FEB 2021 to 25 MAR 2021