

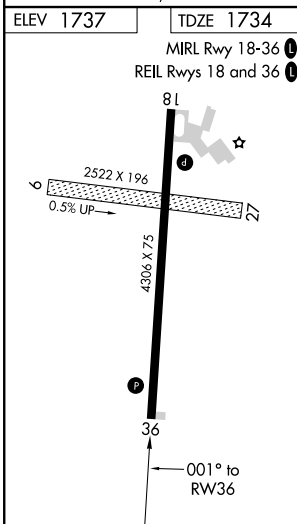
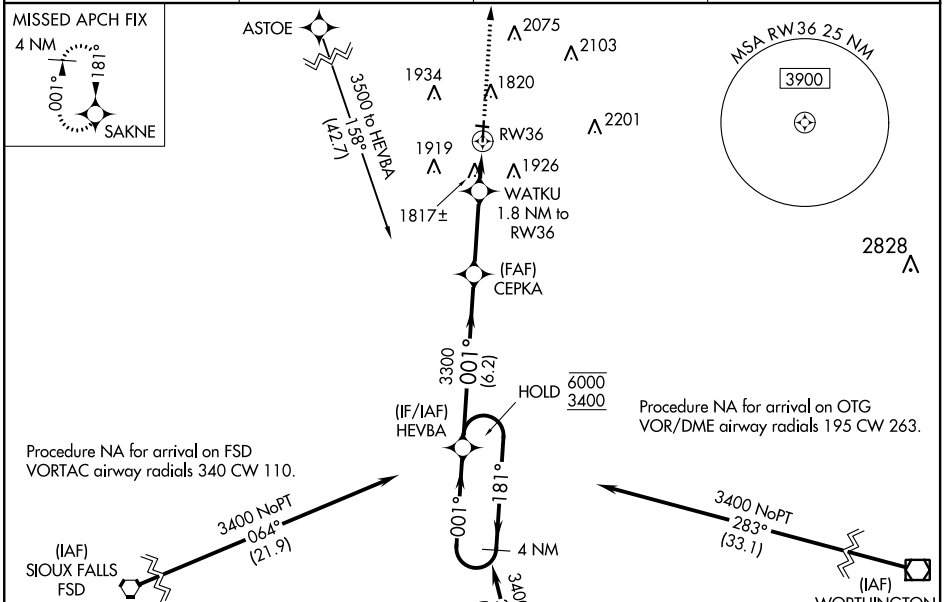
WAAS CH <b>69332</b> <b>W36A</b>	APP CRS <b>001°</b>	Rwy Idg TDZE <b>1734</b> Apt Elev <b>1737</b>
--	------------------------	---

# RNAV (GPS) RWY 36

PIPESTONE MUNI (PQN)

RNP APCH.	MISSED APPROACH: Climb to 3800 direct SAKNE and hold.
-----------	---

AWOS-3 <b>118.375</b>	MINNEAPOLIS CENTER <b>132.05 317.4</b>	GCO <b>121.725</b>	UNICOM <b>122.8 (CTAF) 0</b>
--------------------------	---	-----------------------	---------------------------------



4 NM Holding Pattern HEVBA		VGSi and RNAV glidepath not coincident (VGSi Angle 3.00/TCH 30).		3800	SAKNE
6000	←181°	CEPKA	WATKU	↑	✧
3400	001°	3300	1.8 NM to RW36	*LNAV only.	
GP 3.00°	001°	3300	*1 NM to RW36	*2340	
TCH 40					
		6.2 NM	3 NM	0.8	1 NM
CATEGORY	A	B	C	D	
LPV DA		1934-1	200 (200-1)		NA
LNAV/VNAV DA		1984-1	250 (300-1)		NA
LNAV MDA		2080-1	346 (400-1)		NA
CIRCLING	2200-1	463 (500-1)	2280-1½ 543 (600-1½)		NA

NC-1, 25 FEB 2021 to 25 MAR 2021

NC-1, 25 FEB 2021 to 25 MAR 2021