

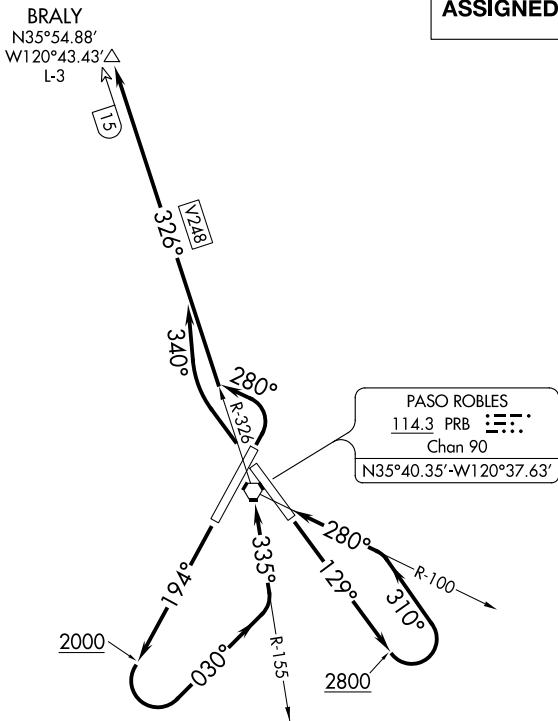
(BRALY1.BRALY) 20142  
**BRALY ONE DEPARTURE**

AL-858 (FAA)

PASO ROBLES MUNI (P.R.B)  
 PASO ROBLES, CALIFORNIA

ASOS  
 120.125  
 OAKLAND CENTER  
 128.7 307.0  
 CTAF  
 123.0

**TOP ALTITUDE:  
 ASSIGNED BY ATC**



NOTE: DME required.

**TAKEOFF MINIMUMS**

- Rwy 1: Standard with minimum climb of 235' per NM to 2200.
- Rwy 13: Standard with minimum climb of 220' per NM to 1700.
- Rwy 19: Standard.
- Rwy 31: Standard with minimum climb of 235' per NM to 2200.

NOTE: Chart not to scale.

**DEPARTURE ROUTE DESCRIPTION**

- TAKEOFF RUNWAY 1:** Climbing left turn on heading 280° to intercept PRB VORTAC R-326 to BRALY/PRB 15 DME, thence . . .
- TAKEOFF RUNWAY 13:** Climb on heading 129° to 2800 then climbing left turn heading 310° to intercept PRB VORTAC R-100 to PRB VORTAC, then on R-326 to BRALY/PRB 15 DME, thence . . .
- TAKEOFF RUNWAY 19:** Climb on heading 194° to 2000 then climbing left turn heading 030° to intercept PRB VORTAC R-155 to PRB VORTAC, then on R-326 to BRALY/PRB 15 DME, thence . . .
- TAKEOFF RUNWAY 31:** Climbing right turn heading 340° and PRB VORTAC R-326 to BRALY/PRB 15 DME, thence . . .

. . . . maintain ATC assigned altitude; expect clearance to filed altitude 10 minutes after departure.

**BRALY ONE DEPARTURE**  
 (BRALY1.BRALY) 21MAY20

PASO ROBLES, CALIFORNIA  
 PASO ROBLES MUNI (P.R.B)

SW-3, 25 FEB 2021 to 25 MAR 2021

SW-3, 25 FEB 2021 to 25 MAR 2021