

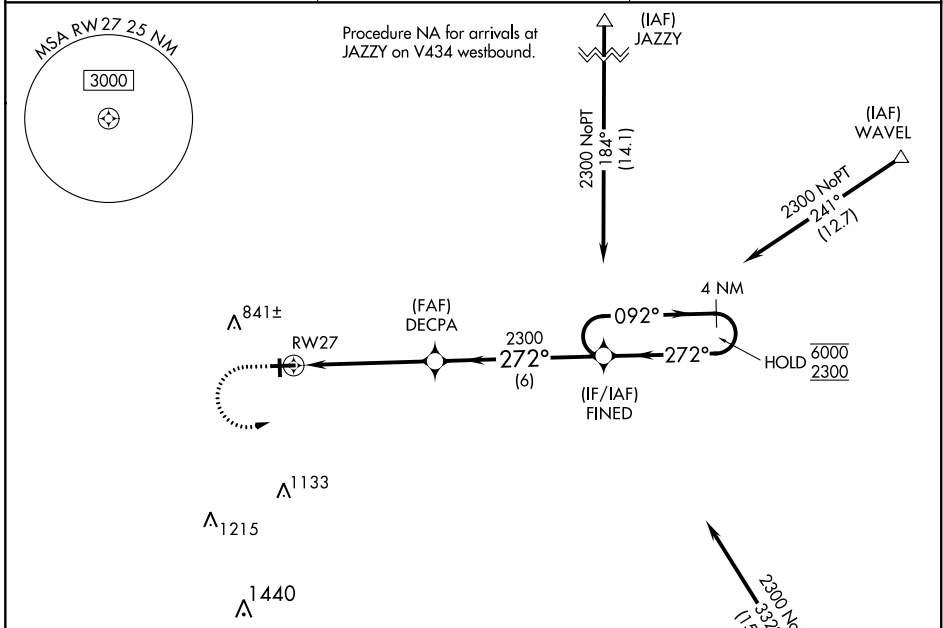
WAAS CH <b>61239</b> <b>W27A</b>	APP CRS <b>272°</b>	Rwy Idg TDZE Apt Elev	<b>4501</b> <b>651</b> <b>654</b>
--	------------------------	-----------------------------	---

# RNAV (GPS) RWY 27

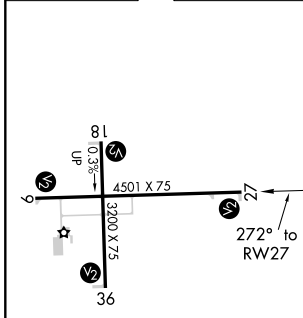
EDGAR COUNTY (PRG)

RNP APCH.	MISSED APPROACH: Climb to 1120 then climbing left turn to 2300 direct FINED and hold.
<b>⚠</b> Circling Rwy 18 NA at night. Rwy 27 helicopter visibility reduction below 3/4 SM NA. For uncompensated Baro-VNAV systems, LNAV/VNAV NA below -16°C or above 54°C.	

AWOS-3 <b>124,175</b>	HULMAN APP CON <b>125,45 339.8</b>	UNICOM <b>123.0 (CTAF) 0</b>
--------------------------	---------------------------------------	---------------------------------

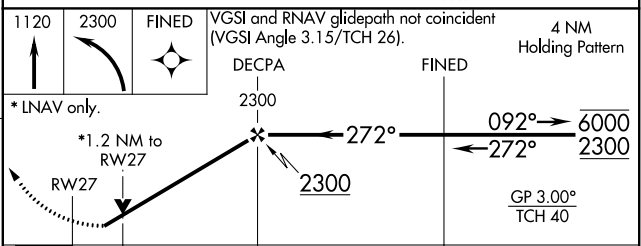


ELEV <b>654</b>	TDZE <b>651</b>
-----------------	-----------------



Procedure NA for arrivals on TTH VORTAC airway radials 254 CW 303.

(IAF) TERRE HAUTE TTH



CATEGORY LPV DA LNAV/VNAV DA LNAV MDA <input checked="" type="checkbox"/> CIRCLING	A	B	C	D
		901-1	250 (300-1)	
		925-1	274 (300-1)	
	1080-1	429 (500-1)	1080-1¼	429 (500-1¼)
	1080-1 426 (500-1)	1120-1 466 (500-1)	1200-1½ 546 (600-1½)	1320-2 666 (700-2)

EC-3, 25 FEB 2021 to 25 MAR 2021

EC-3, 25 FEB 2021 to 25 MAR 2021