

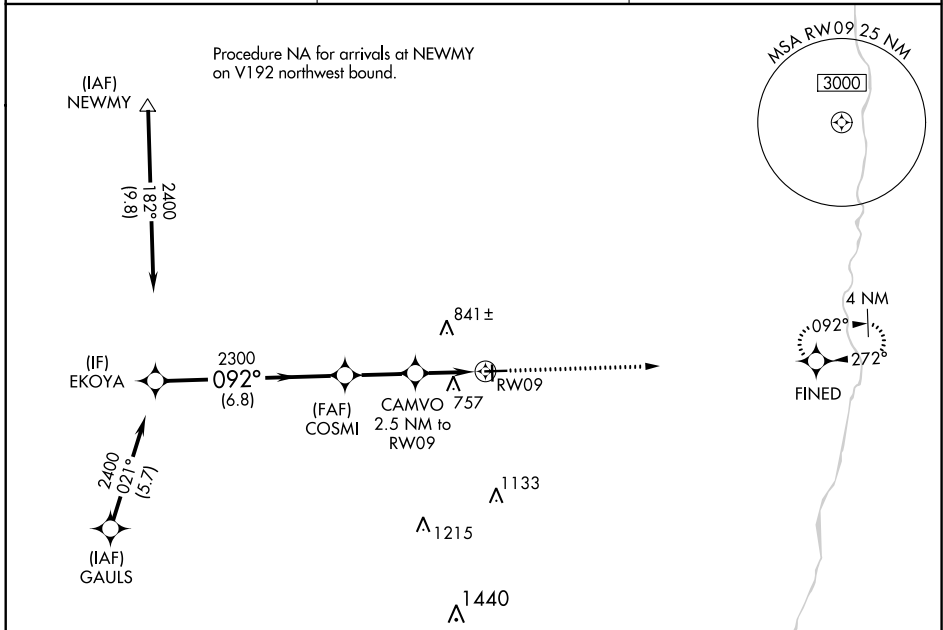
WAAS CH <b>50439</b> <b>W09A</b>	APP CRS <b>092°</b>	Rwy Idg TDZE <b>654</b> Apt Elev <b>654</b>	<b>4501</b> <b>654</b> <b>654</b>
--	------------------------	---	---

# RNAV (GPS) RWY 9

EDGAR COUNTY (PRG)

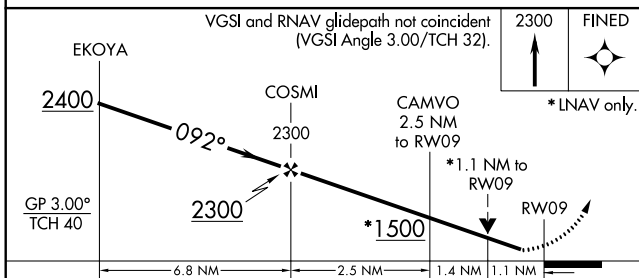
RNP APCH.	MISSED APPROACH: Climb to 2300 direct FINED and hold.
<p>▼ For uncompensated Baro-VNAV systems, LNAV/VNAV NA below -16°C or above 54°C. ▲ Rwy 9 helicopter visibility reduction below 3/4 SM NA. Circling Rwy 18 NA at night.</p>	

AWOS-3 <b>124.175</b>	HULMAN APP CON <b>125.45 339.8</b>	UNICOM <b>123.0 (CTAF) 0</b>
--------------------------	---------------------------------------	---------------------------------

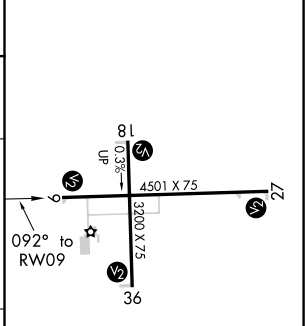


Procedure NA for arrivals at GAULS on V50 westbound.

VGSI and RNAV glidepath not coincident (VGSI Angle 3.00/TCH 32).



ELEV 654	TDZE 654
----------	----------



CATEGORY	A	B	C	D
LPV DA		904-1	250 (300-1)	
LNAV/VNAV DA		908-1	254 (300-1)	
LNAV MDA		1020-1	366 (400-1)	
<b>CIRCLING</b>	1080-1 426 (500-1)	1120-1 466 (500-1)	1200-1½ 546 (600-1½)	1320-2 666 (700-2)

REIL Rwy 27  
MIRL Rwy 9-27 and 18-36 0

EC-3, 25 FEB 2021 to 25 MAR 2021

EC-3, 25 FEB 2021 to 25 MAR 2021