

WAAS CH <b>90508</b> <b>W32A</b>	APP CRS <b>319°</b>	Rwy Idg TDZE Apt Elev	<b>4001</b> <b>1012</b> <b>1013</b>
--	------------------------	-----------------------------	---

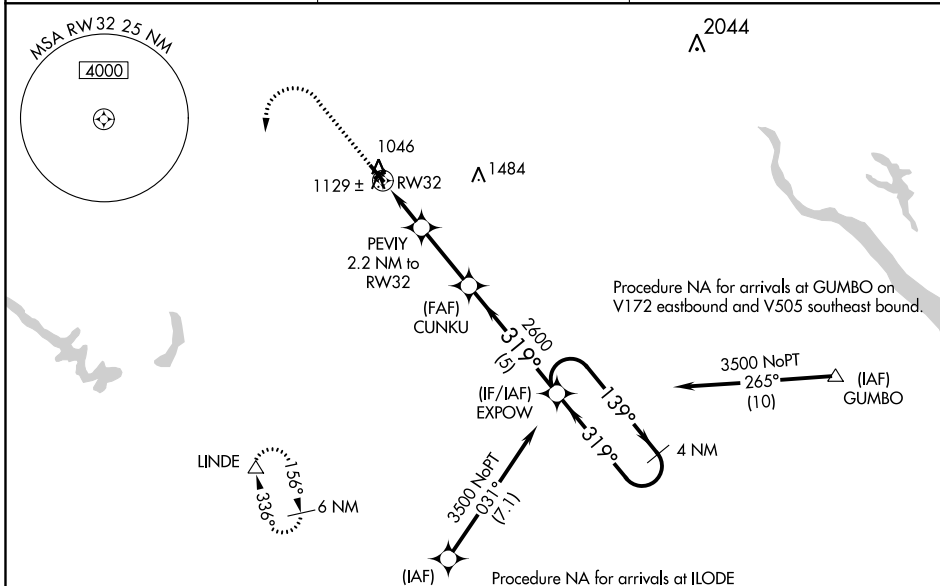
# RNAV (GPS) RWY 32

PERRY MUNI (P.R.O)

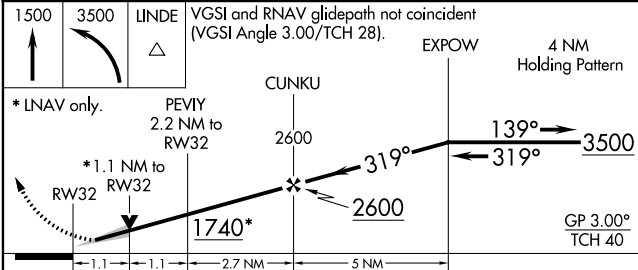
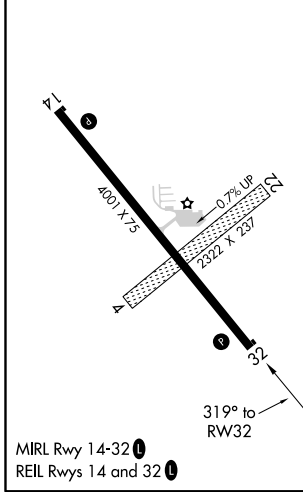
**⚠** For uncompensated Baro-VNAV systems, LNAV/VNAV NA below -17°C (2°F) or above 54°C (130°F). DME/DME RNP-0.3 NA. When local altimeter setting not received, use Boone altimeter setting and increase all DA 66 feet and all MDA 80 feet. Increase LPV visibility all Cats to ¾ mile, and increase LNAV/VNAV visibility all Cats to 1 ½ mile. Baro-VNAV and VDP NA when using Boone altimeter setting.

**MISSED APPROACH:** Climb to 1500 then climbing left turn to 3500 direct LINDE and hold.

AWOS-3 <b>118.0</b>	DES MOINES APP CON <b>135.2 360.7</b>	UNICOM <b>122.8 (CTAF) 0</b>
------------------------	--	---------------------------------



ELEV <b>1013</b>	TDZE <b>1012</b>
------------------	------------------



CATEGORY	A	B	C	D
LPV DA	1212-¾	200 (200-¾)		NA
LNAV/VNAV DA	1299-⅞	287 (300-⅞)		NA
LNAV MDA	1380-1	368 (400-1)		NA
CIRCLING	1460-1 447 (500-1)	1480-1 467 (500-1)		NA

NC-3, 25 FEB 2021 to 25 MAR 2021

NC-3, 25 FEB 2021 to 25 MAR 2021