

VOR/DME PRX <b>113.6</b> Chan <b>83</b>	APP CRS <b>350°</b>	Rwy Idg TDZE Apt Elev	<b>6002</b> <b>532</b> <b>548</b>
---	------------------------	-----------------------------	---

# VOR RWY 35

COX FIELD (PRX)

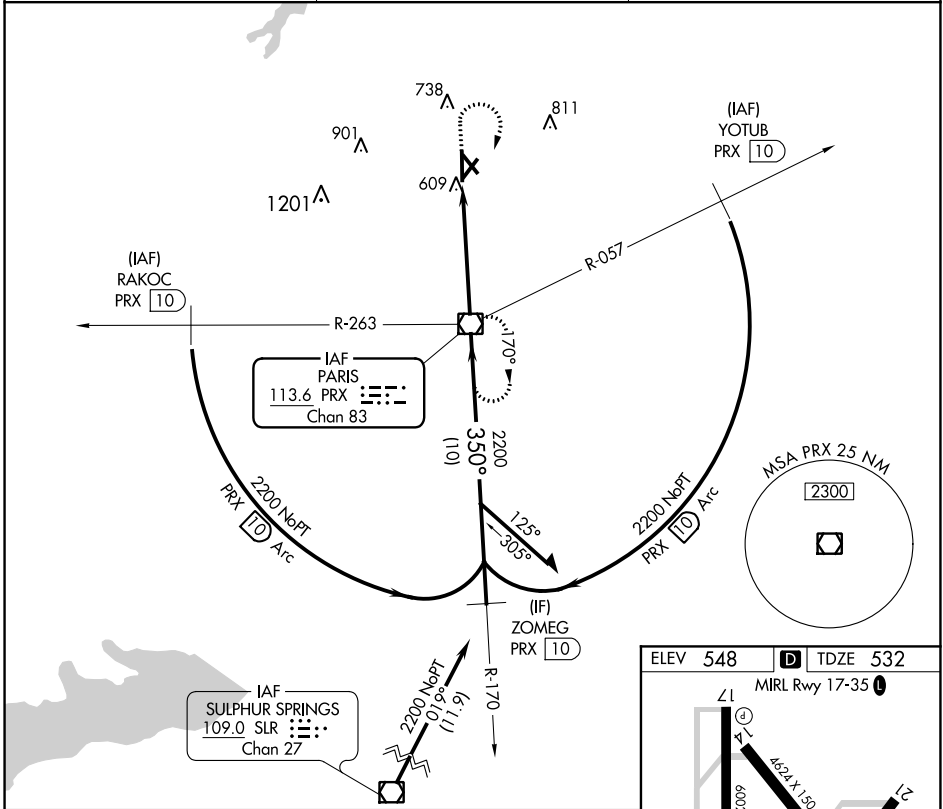
**▼** If local altimeter setting not received, use Sulphur Springs altimeter setting and increase all MDAs 80 feet. Visibility reduction by helicopters NA. VDP NA when using Sulphur Springs altimeter setting.

**MISSED APPROACH:** Climb to 2000 then climbing right turn to 2200 direct PRX VOR/DME.

AWOS-3PT  
**119.675**

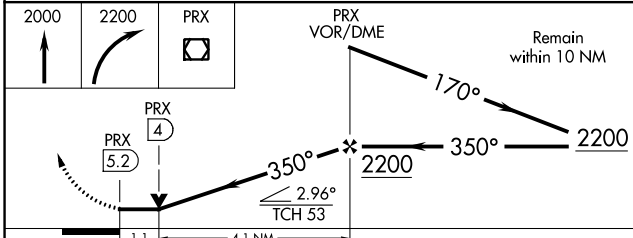
FORT WORTH CENTER  
**124.875**

UNICOM  
**122.975 (CTAF)**

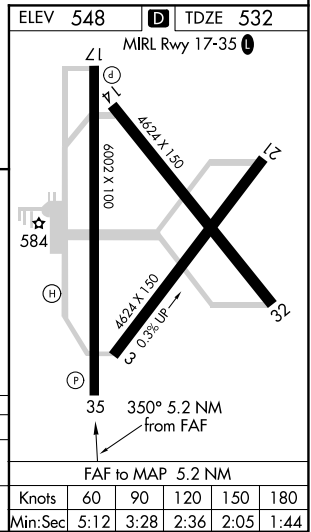


SC-2, 25 FEB 2021 to 25 MAR 2021

SC-2, 25 FEB 2021 to 25 MAR 2021



CATEGORY	A	B	C	D
S-35	940-1 412 (500-1)	408 (500-1)	940-1 1/8 408 (500-1 1/8)	940-1 1/4 408 (500-1 1/4)
CIRCLING	960-1 412 (500-1)	1000-1 452 (500-1)	1060-1 1/2 512 (600-1 1/2)	1100-2 552 (600-2)



Knots	60	90	120	150	180
Min:Sec	5:12	3:28	2:36	2:05	1:44