

(KAYLN2.KAYLN) 19227

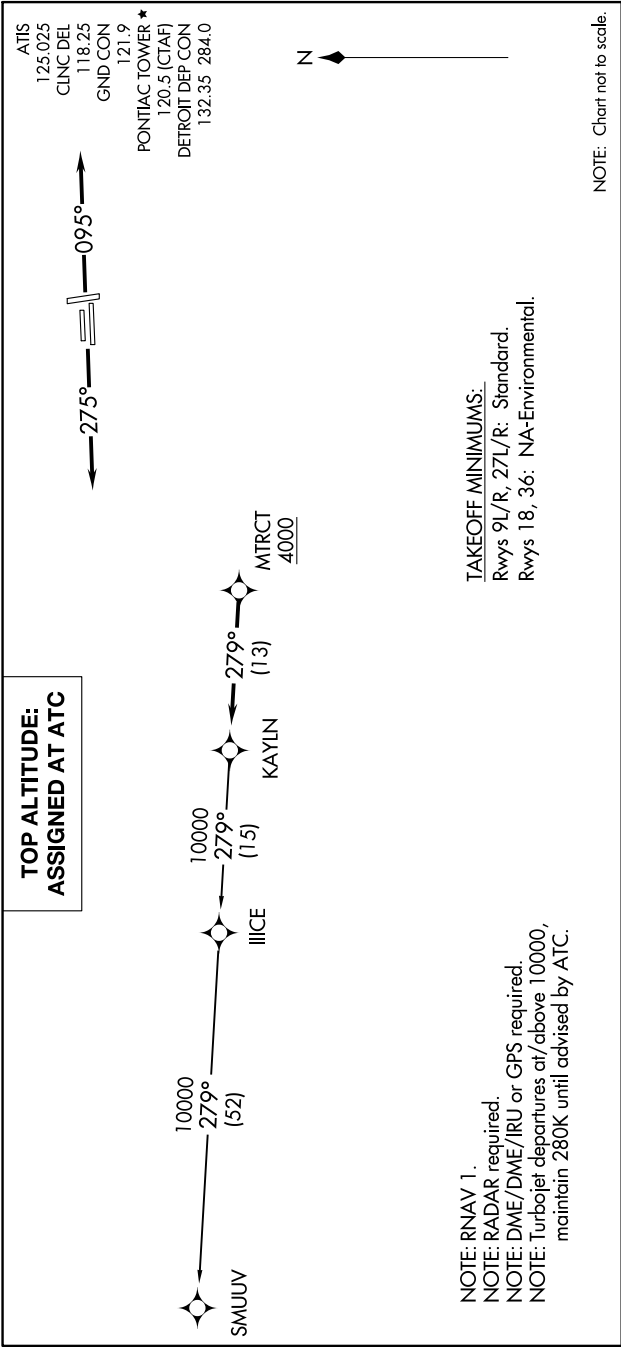
# KAYLN TWO DEPARTURE (RNAV)

AL-5052 (FAA)

OAKLAND COUNTY INTL (PTK)

PONTIAC, MICHIGAN

EC-1, 25 FEB 2021 to 25 MAR 2021



## DEPARTURE ROUTE DESCRIPTION

**TAKEOFF RUNWAYS 9L/R:** Climb on heading 095° or as assigned for RADAR vectors to cross MTRCT at or above 4000, thence....

**TAKEOFF RUNWAYS 27L/R:** Climb on heading 275° or as assigned for RADAR vectors to cross MTRCT at or above 4000, thence....

....on track 279° to KAYLN, then on (transition). Maintain ATC assigned altitude, expect filed altitude 10 minutes after departure.

SMUUV TRANSITION (KAYLN2.SMUUV):

# KAYLN TWO DEPARTURE (RNAV)

(KAYLN2.KAYLN) 15AUG19

OAKLAND COUNTY INTL (PTK)  
PONTIAC, MICHIGAN

EC-1, 25 FEB 2021 to 25 MAR 2021