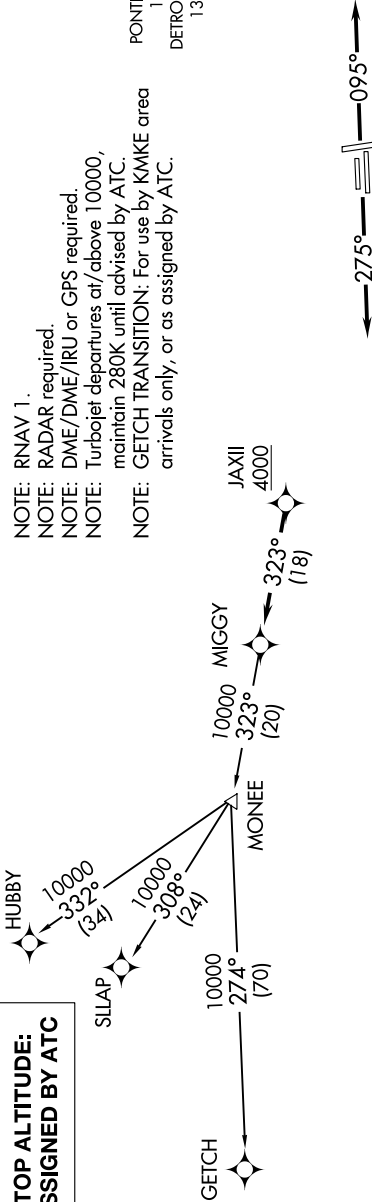


EC-1, 25 FEB 2021 to 25 MAR 2021

ATIS  
125.025  
CLNC DEL  
118.25  
GND CON  
121.9  
PONTIAC TOWER ★  
120.5 (CTAF)  
DETROIT DEP CON  
132.35 284.0

NOTE: RNAV 1.  
NOTE: RADAR required.  
NOTE: DME/DME/IRU or GPS required.  
NOTE: Turbojet departures at/above 10000, maintain 280K until advised by ATC.  
NOTE: GETCH TRANSITION: For use by KMKC area arrivals only, or as assigned by ATC.



TAKEOFF MINIMUMS:  
Rwys 9L/R, 27L/R: Standard.  
Rwys 18, 36: NA-Environmental.

NOTE: Chart not to scale.

DEPARTURE ROUTE DESCRIPTION

TAKEOFF RUNWAYS 9L/R: Climb on heading 095° or as assigned for RADAR vectors to cross JAXII at or above 4000, thence....  
TAKEOFF RUNWAYS 27L/R: Climb on heading 275° or as assigned for RADAR vectors to cross JAXII at or above 4000, thence....  
....on track 323° to MIGGY, then on (transition). Maintain ATC assigned altitude, expect filed altitude 10 minutes after departure.

GETCH TRANSITION (MIGGY2.GETCH):  
HUBBY TRANSITION (MIGGY2.HUBBY):  
SILAP TRANSITION (MIGGY2.SILAP):

EC-1, 25 FEB 2021 to 25 MAR 2021