

(ZETTR3.ZETTR) 19339

ZETTR THREE DEPARTURE (RNAV)

AL-5052 (FAA)

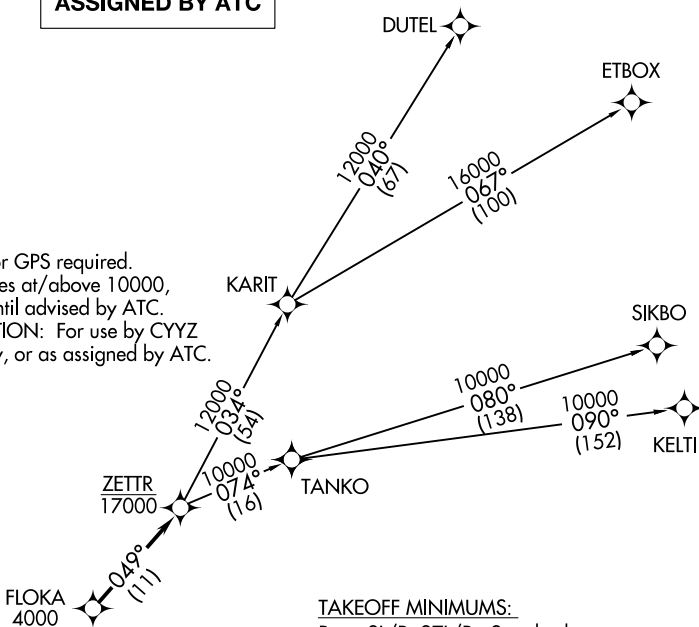
OAKLAND COUNTY INTL (PTK)

PONTIAC, MICHIGAN

ATIS
 125.025
 CLNC DEL
 118.25
 GND CON
 121.9
 PONTIAC TOWER★
 120.5 (CTAF)
 DETROIT DEP CON
 132.35 284.0

**TOP ALTITUDE:
 ASSIGNED BY ATC**

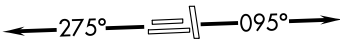
NOTE: RNAV 1.
 NOTE: RADAR required.
 NOTE: DME/DME/IRU or GPS required.
 NOTE: Turbojet departures at/above 10000,
 maintain 280K until advised by ATC.
 NOTE: TANKO TRANSITION: For use by CYYZ
 area arrivals only, or as assigned by ATC.



TAKEOFF MINIMUMS:
 Rwys 9L/R, 27L/R: Standard.
 Rwys 18, 36: NA-Environmental.

EC-1, 25 FEB 2021 to 25 MAR 2021

EC-1, 25 FEB 2021 to 25 MAR 2021



DEPARTURE ROUTE DESCRIPTION

TAKEOFF RUNWAYS 9L/R: Climb on heading 095° or as assigned for RADAR vectors to cross FLOKA at or above 4000, thence...
TAKEOFF RUNWAYS 27L/R: Climb on heading 275° or as assigned for RADAR vectors to cross FLOKA at or above 4000, thence...

...on track 049° to cross ZETTR at or below 17000, then on (transition). Maintain ATC assigned altitude, expect filed altitude 10 minutes after departure.

- DUTEL TRANSITION (ZETTR3.DUTEL):
- ETBOX TRANSITION (ZETTR3.ETBOX):
- KELTI TRANSITION (ZETTR3.KELTI):
- SIKBO TRANSITION (ZETTR3.SIKBO):
- TANKO TRANSITION (ZETTR3.TANKO):

NOTE: Chart not to scale.

ZETTR THREE DEPARTURE (RNAV)
 (ZETTR3.ZETTR) 05DEC19

PONTIAC, MICHIGAN
 OAKLAND COUNTY INTL (PTK)