

WAAS CH 99720 W13A	APP CRS 131°	Rwy Idg 5505 TDZE 1289 Apt Elev 1289
--	------------------------	--

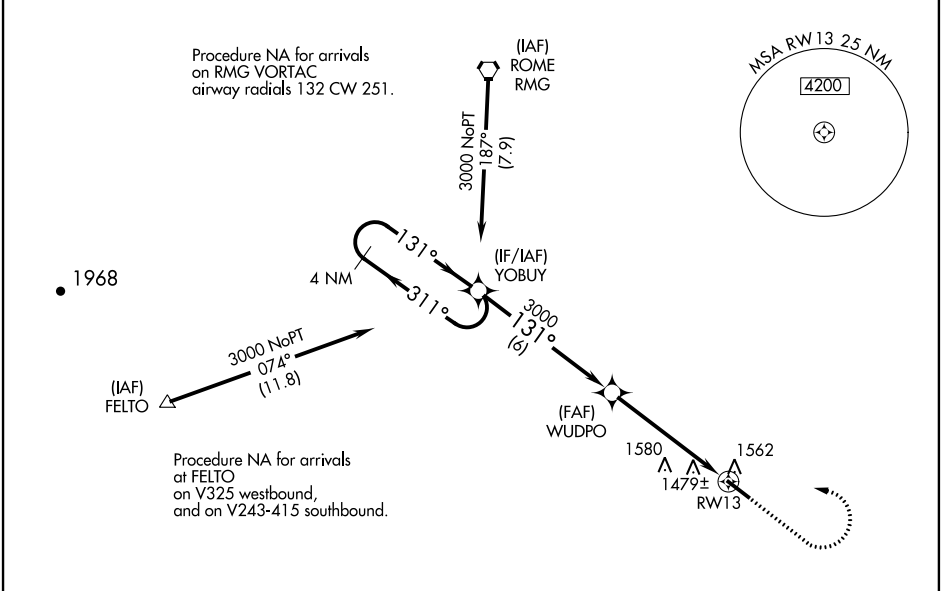
RNAV (GPS) RWY 13

PAULDING NORTHWEST ATLANTA (PUJ)

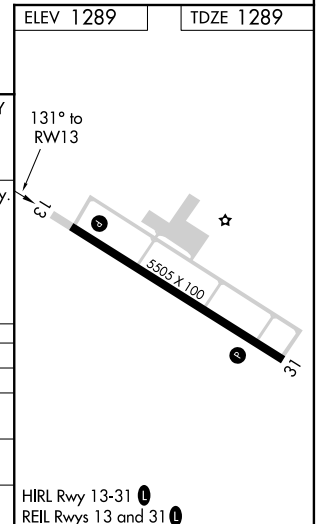
NA Baro-VNAV NA when using Cartersville altimeter setting. For uncompensated Baro-VNAV systems, LNAV/VNAV NA below -17°C (2°F) or above 35°C (95°F). DME/DME RNP-0.3 NA. When local altimeter setting not received, use Cartersville altimeter setting and increase all DA 106 feet and all MDA 120 feet; increase LPV all Cats and LNAV Cats C/D visibilities 3/8 mile, increase LNAV/VNAV all Cats and Circling Cats C/D visibilities 1/2 mile. VDP NA with Cartersville altimeter setting.

MISSED APPROACH: Climb to 1700 then climbing left turn to 3000 direct YOBUY and hold.

AWOS-3 126,225	ATLANTA APP CON 121.0 268.7	UNICOM 123,075 (CTAF)
--------------------------	---------------------------------------	---------------------------------



4 NM Holding Pattern		YOBUY	WUDPO	3000	1700	3000	YOBUY
3000		← 311°	→ 131°	3000	↑	↘	☆
GP 3.00° TCH 50		← 131°	→ 131°	3000	* LNAV only.		
		← 6 NM	← 3.7 NM	← 1.5 NM	*1.5 NM to RWY 13		
CATEGORY	A	B	C	D			
LPV DA		1539-3/4	250 (300-3/4)				
LNAV/VNAV DA		1797-13/4	508 (600-13/4)				
LNAV MDA	1820-1	531 (600-1)	1820-1 1/2	531 (600-1 1/2)			
CIRCLING	1880-1	591 (600-1)	1880-1 1/2	1940-2			
			591 (600-1 1/2)	651 (700-2)			



SE-4, 25 FEB 2021 to 25 MAR 2021

SE-4, 25 FEB 2021 to 25 MAR 2021