

LOC/DME I-PUW 110.35 Chan 40(Y)	APP CRS 050°	Rwy Idg TDZE Apt Elev	7100 2567 2567
--	------------------------	-----------------------------	---


ILS or LOC RWY 5

PULLMAN/MOSCOW RGNL (PUW)

DME required.

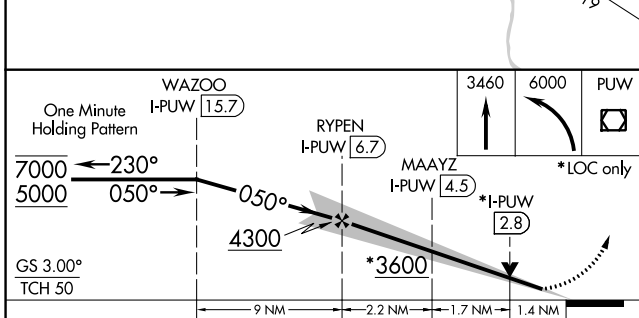
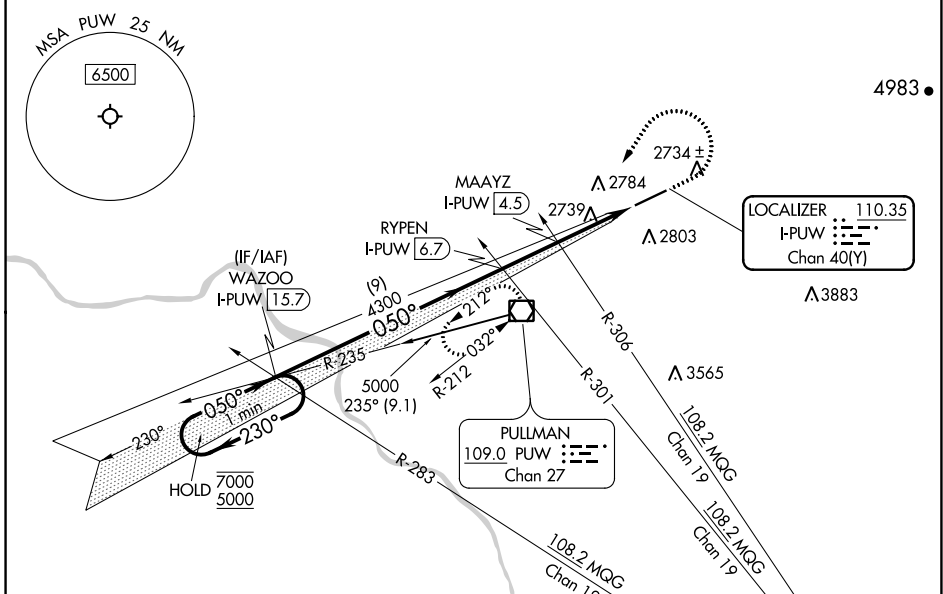
▼ For inop ALS, increase S-ILS 5 all Cats visibility to RVR 4500 and S-LOC 5 Cat C/D visibility to 1 1/2 SM.
▲ † RVR 1800 authorized with use of FD or AP or HUD to DA.

MALSR



MISSED APPROACH: Climb to 3460 then climbing left turn to 6000 direct PUW VOR/DME, continue climb-in-hold to 6000.
 # Missed approach requires minimum climb of 222 feet per NM to 4180.

ASOS 135.675	SEATTLE CENTER 123.95 290.55	UNICOM 122.8 (CTAF) 0
------------------------	--	---------------------------------



ELEV 2567	TDZE 2567
CATEGORY A B C D S-ILS 5 #† 2767/24 200 (200-1/2) S-ILS 5 2857/24 290 (300-1/2) S-LOC 5 3060/24 493 (500-1/2) 3060/50 493 (500-1) C CIRCLING 3080-1 3120-1 3140-1 1/2 3420-2 3/4 513 (600-1) 553 (600-1) 573 (600-1 1/2) 853 (900-2 3/4)	
REIL Rwy 23 0 HIRL Rwy 5-23 0 FAF to MAP 5.3 NM 050° 5.3 NM from FAF 2593 7100 X 150 050° 5.3 NM from FAF 050° 5.3 NM from FAF	
FAF to MAP 5.3 NM Knots 60 90 120 150 180 Min:Sec 5:18 3:32 2:39 2:07 1:46	

NW-1, 25 FEB 2021 to 25 MAR 2021

NW-1, 25 FEB 2021 to 25 MAR 2021