


VOR/DME P _{UW}	APP CRS	Rwy Idg TDZE	7100
109.0	027°	Apt Elev	2567
Chan 27			2567

VOR RWY 5

PULLMAN/MOSCOW RGNL (PUW)

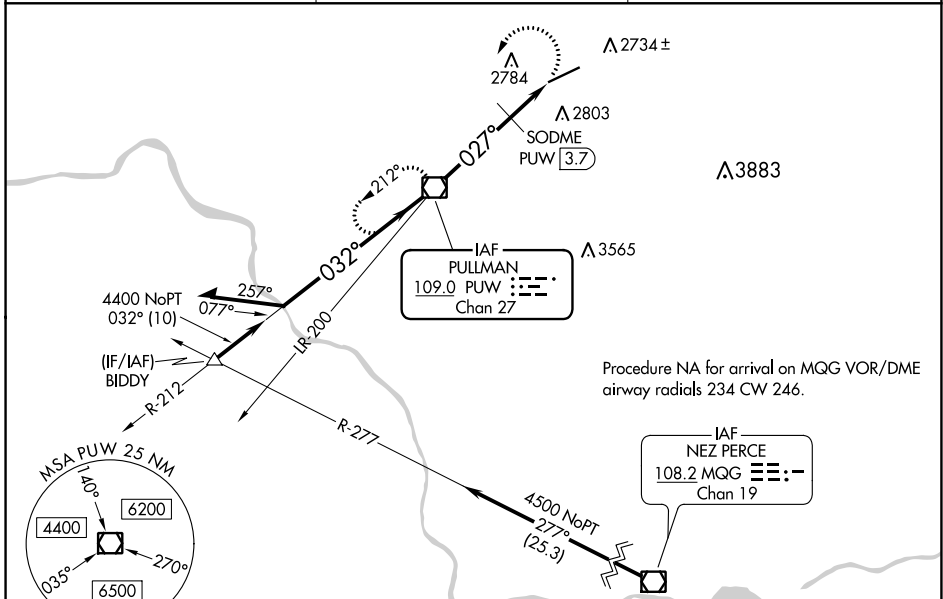
DME required.

▼ Procedure NA at night.
 ▲ Rwy 5 helicopter visibility reduction below 1 SM NA.
 Inop table does not apply to S-5 and SODME fix minimums Cats A/B.
 For inop ALS, increase S-5 SODME fix minimums Cat C/D visibility to 1 3/8 SM.

MALSR 

MISSED APPROACH: Climbing left turn to 6000 direct PUW VOR/DME and hold, continue climb-in-hold to 6000.

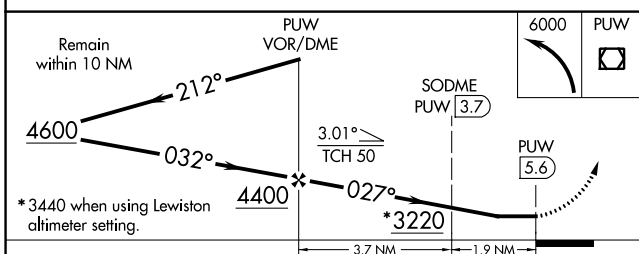
ASOS 135.675	SEATTLE CENTER 123.95 290.55	UNICOM 122.8 (CTAF) 0
------------------------	--	---------------------------------



NW-1, 25 FEB 2021 to 25 MAR 2021

NW-1, 25 FEB 2021 to 25 MAR 2021

ELEV 2567	D TDZE 2567
-----------	--------------------



CATEGORY	A	B	C	D
S-5	3220/50	653 (700-1)	3220-1 3/8	653 (700-1 3/8)
C CIRCLING	3220-1	653 (700-1)	3220-1 7/8	3420-2 3/4
SODME FIX MINIMUMS				
S-5	3040/50 473 (500-1)			
C CIRCLING	3080-1	3120-1	3140-1 1/2	3420-2 3/4
	513 (600-1)	553 (600-1)	573 (600-1 1/2)	853 (900-2 3/4)

